



Working Instructions

- mechanical -



Xperia™ X8

E15i, E15a, E16i, E16a



CONTENTS

1	Exterior Views.....	4
1.1	X8	4
2	Tools	5
3	Disassembly.....	6
3.1	Cover Rear	6
3.2	Inner frame	7
3.3	Main PBA	8
3.4	Cover Front assy.....	11
3.5	Carrier LCM & Display 3.0 TFT	11
4	Replacement	13
4.1	Cover Rear	13
4.2	Inner Frame	13
4.3	Cover Front assy.....	13
4.4	Carrier LCM	13
4.5	Display 3.0 TFT	14
4.6	Adhesive Conductive Copper	15
4.7	Adhesive FPC Display	16
4.8	Camera 3 MPixel.....	17
4.9	Cap USB.....	19
4.10	Co Brand.....	21
4.11	Dome Sheet	23
4.12	Earspeaker.....	24
4.13	Front Key Activator	25
4.14	Gasket Camera	26
4.15	Gasket Conductive 3 x 4.....	27
4.16	Gasket Conductive 3,8x2,3	28
4.17	Gasket Loudspeaker	30
4.18	Grommet Mic	31
4.19	Keys Front	32
4.20	Keys Side.....	33
4.21	Label MicroSD	34
4.22	Label Mobile Phone.....	35
4.23	Liquid Indicator	36
4.24	Mesh Earspeaker.....	37
4.25	SAR Shield 1/2/5.....	38
4.26	SAR Shield 1/8.....	40
4.27	Shield Can Lid BB	42
4.28	Shield Can Lid LNA	43



4.29	Shield Can Lid Radio	44
4.30	Shield Can Lid WLAN.....	45
4.31	Speaker & Adhesive Loudspeaker.....	46
4.32	Tape RF connector.....	48
4.33	Window Camera & Adhesive Camera Window	49
4.34	Board Swap - Replacement	51
4.35	Board Swap – Change Label	51
4.36	Board Swap – Customize of Software	51
5	Reassembly.....	52
5.1	Carrier LCM & Display 3.0 TFT	52
5.2	Cover Front assy.....	52
5.3	Main PBA	53
5.4	Inner Frame	55
5.5	Cover Rear.....	56
6	Country of Origin Barcodes for Brazil.....	58
7	Revision History	59

***For general information about mechanical repair related issues, refer to
1220-1333: Generic Repair Manual - mechanical***



1 Exterior Views

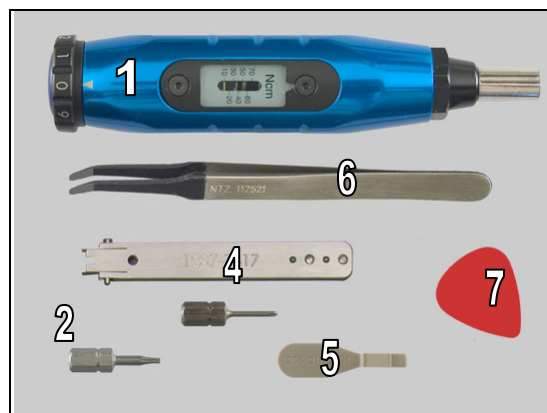
1.1 X8



2 Tools

SPECIAL TOOLS

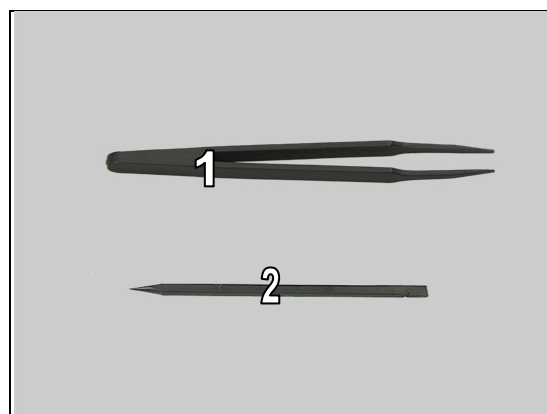
1. Torque Screwdriver
2. Bits (T4)
3. Bits (PH00)
4. Camera Removal Tool
5. Front Opening Tool
6. Flex Film Assembly Tool
7. Guitar Pick



For part no's on the tools above, refer to the 'Tools Catalogue/Matrix'.

STANDARD TOOLS

1. A pair of Tweezers
2. Nylon Pointer



3 Disassembly

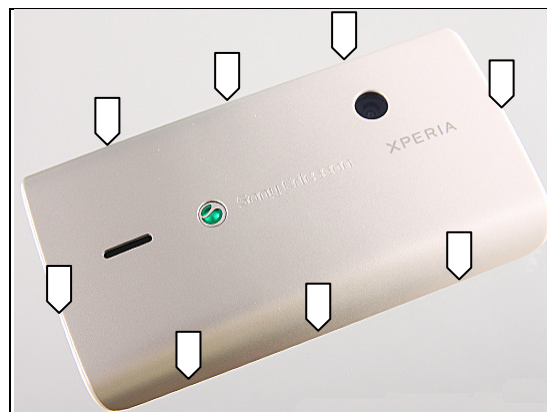
The disassembly is done in the following order:

1. Cover Rear
2. Inner Frame
3. Main PBA
4. Cover Front assy
5. Carrier LCM
6. Display 3.0 TFT

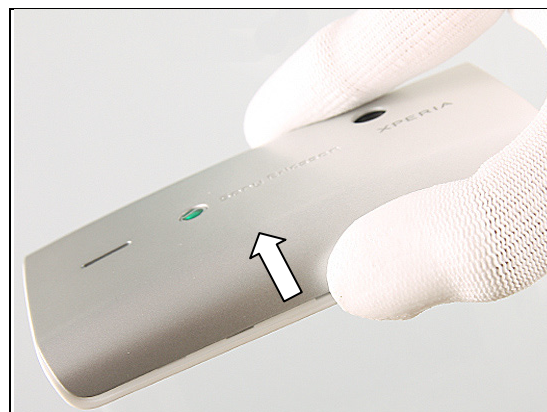


3.1 Cover Rear

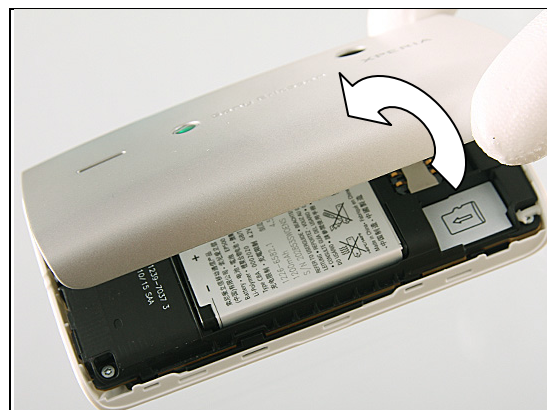
There are eight hooks to secure the Cover Rear.



Unsnap the hooks along the side and then the hook on the top and bottom with your fingers.



Turn over the Cover Rear to release the hooks on the other side and remove it.

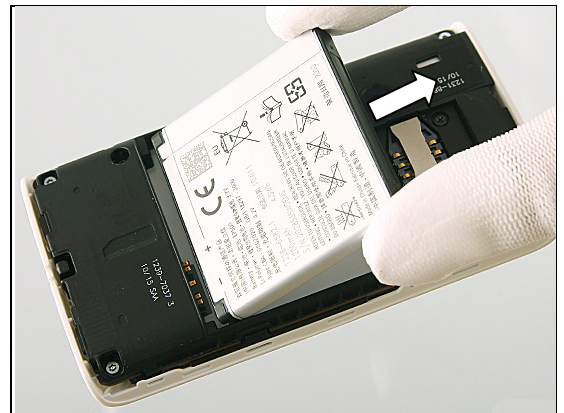


Disassembly

Lift up the Battery.



Remove the Battery.



3.2 Inner frame

Remove the screw with a PH00 bits.

Scrap the screw. The screw shall not be reused.



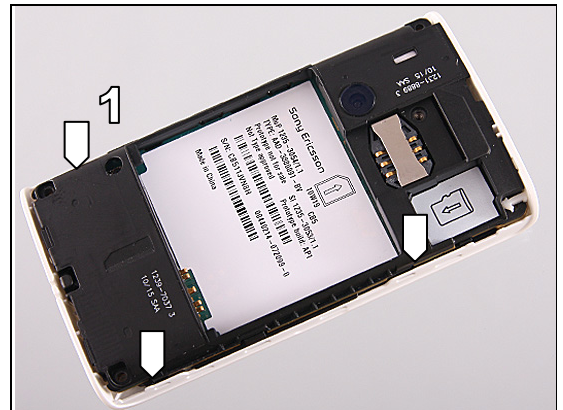
Remove the four screws with a T4 bits.

Scrap the screws. The screws shall not be reused.



Disassembly

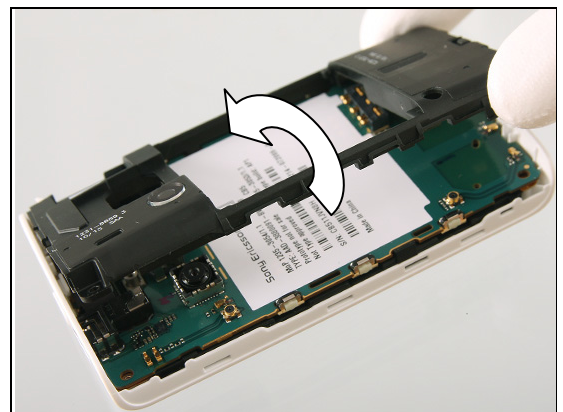
There are three hooks to secure the Inner Frame. Start with the hook marked **1**.



Push the Inner Frame with your fingers to release the hook.

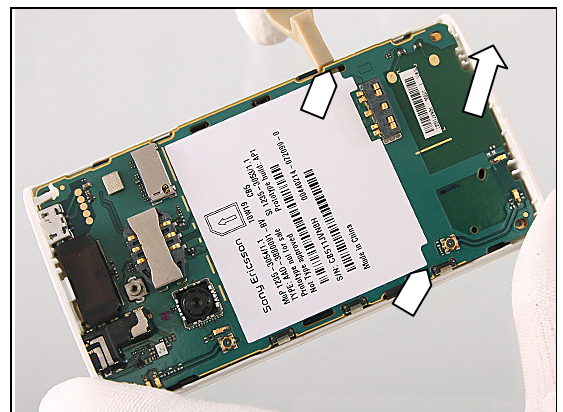


Turn over the Inner Frame to release the other two hooks and remove it



3.3 Main PBA

Insert the Front Opening Tool to release the Main PBA.

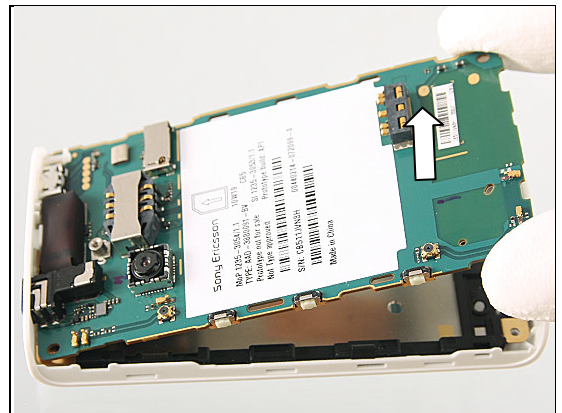


Disassembly

Repeat the action on the opposite side.

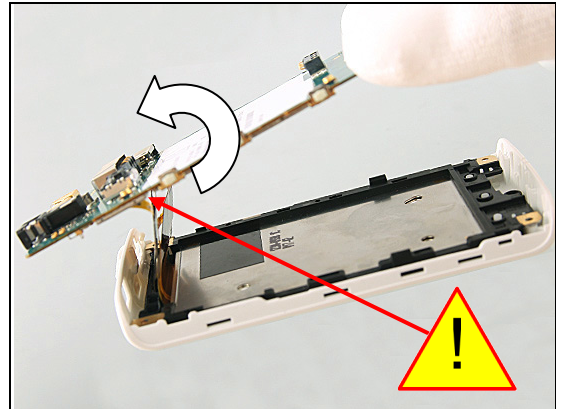


Lift gently up the bottom of the Main PBA to approximately 30 degrees.

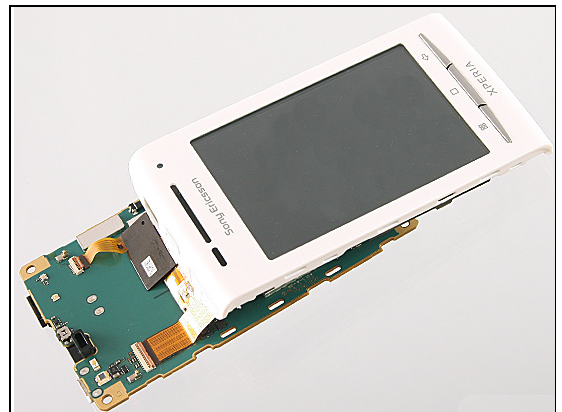


Move the Main PBA gently ahead of the front.

Do not stretch the flex films.

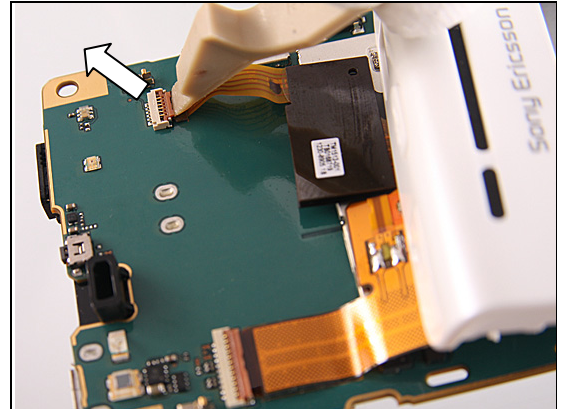


Turn over the unit.

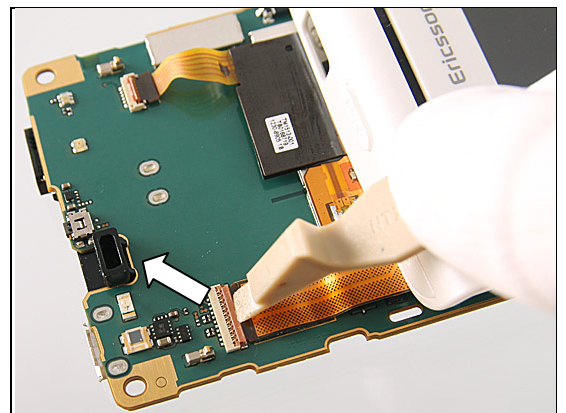


Disassembly

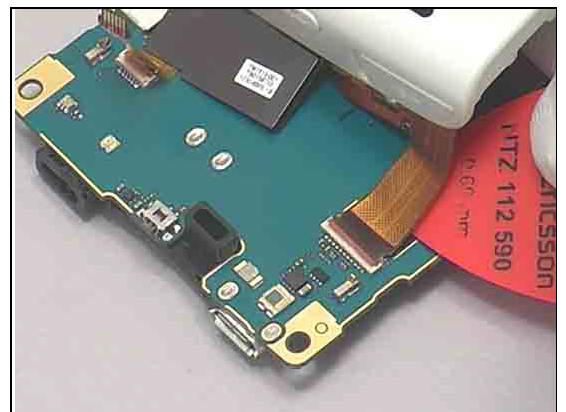
Release the ZIF connector for the touch.



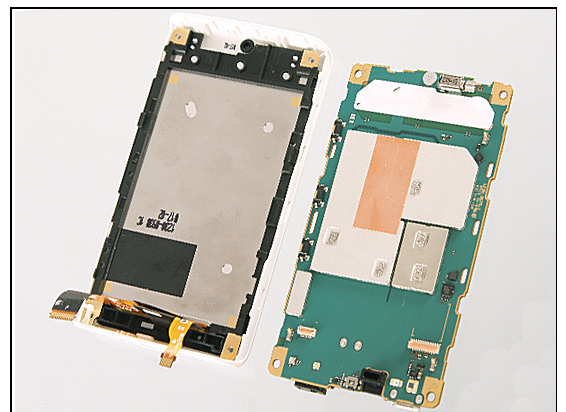
Release the ZIF connector for the display.



Peel gently off the flex film from the Adhesive FPC Display with a Guitar Pick.



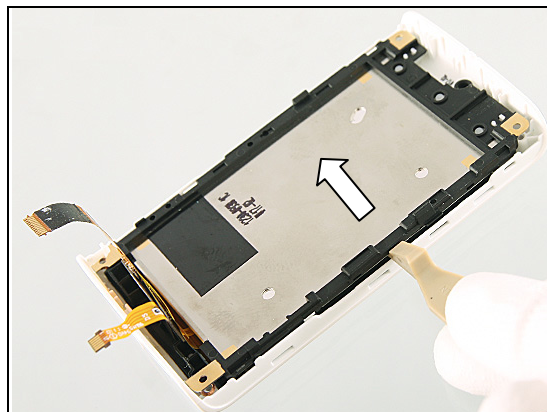
Separate the front from the Main PBA carefully.



Disassembly

3.4 Cover Front assy

Release the hook gently with a Front Opening Tool.

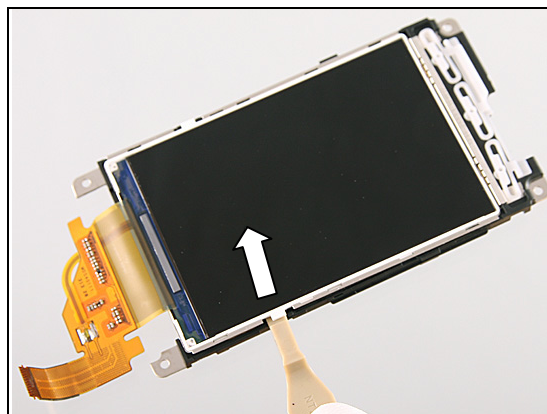


Lift gently up the Cover Front assy.

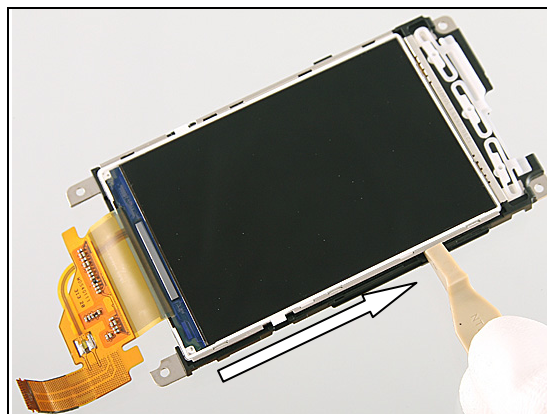


3.5 Carrier LCM & Display 3.0 TFT

Release the Display 3.0 TFT.

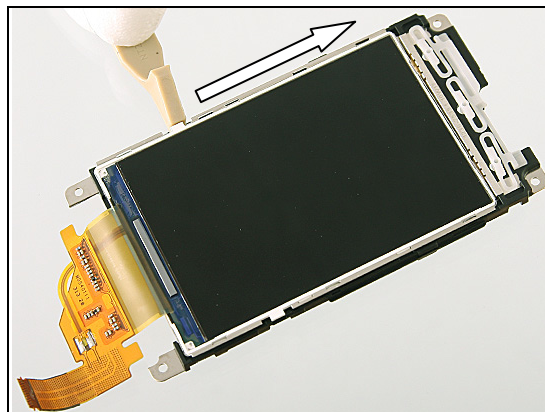


Slide along the side.

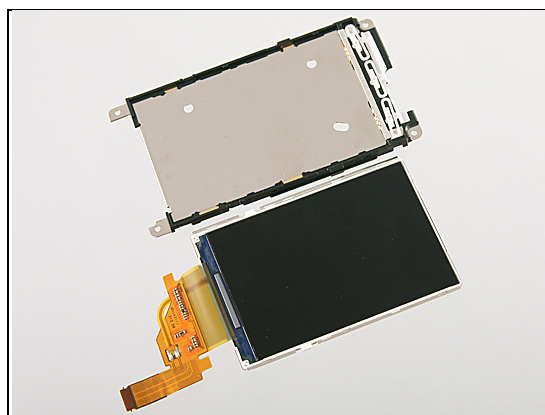


Disassembly

Repeat the action on the opposite side.



Separate the Display 3.0 TFT from the Carrier LCM.



4 Replacement

4.1 Cover Rear

Follow the 3.1 Disassembly instructions.

Prepare the new Cover Rear.

Follow the 5.5 Reassembly instructions.

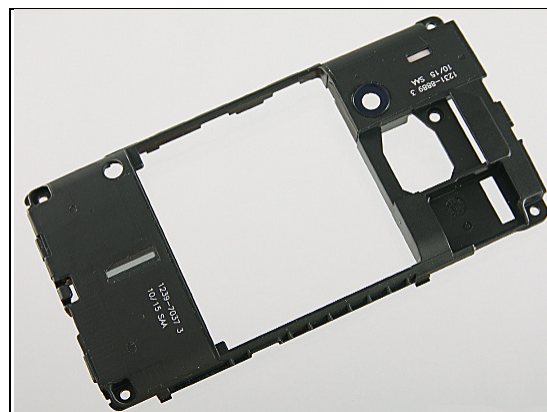


4.2 Inner Frame

Follow the 3.1 – 3.2 Disassembly instructions.

Prepare the new Inner Frame.

Follow the 5.4 – 5.5 Reassembly instructions.



4.3 Cover Front assy

Follow the 3.1 – 3.4 Disassembly instructions.

Prepare the new Cover Front assy.

Follow the 5.2 – 5.5 Reassembly instructions.

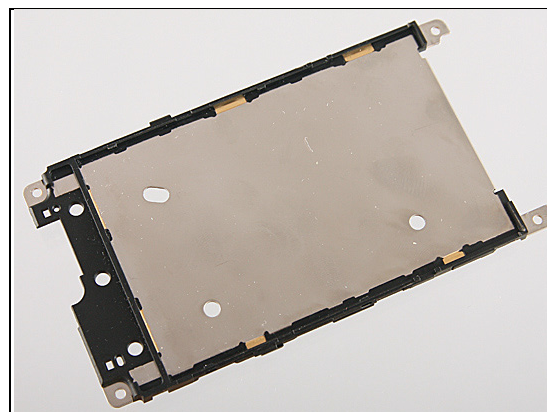


4.4 Carrier LCM

Follow the 3.1 – 3.5 Disassembly instructions.

Prepare the new Carrier LCM.

Follow the 5.1 – 5.5 Reassembly instructions.



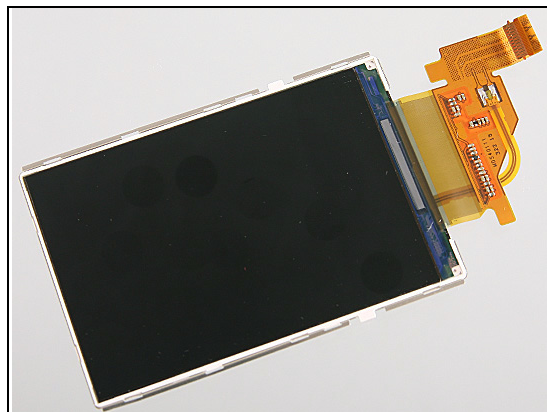
Replacement

4.5 Display 3.0 TFT

Follow the 3.1 – 3.5 Disassembly instructions.

Prepare the new Display 3.0 TFT.

Follow the 5.1 – 5.5 Reassembly instructions.





Replacement

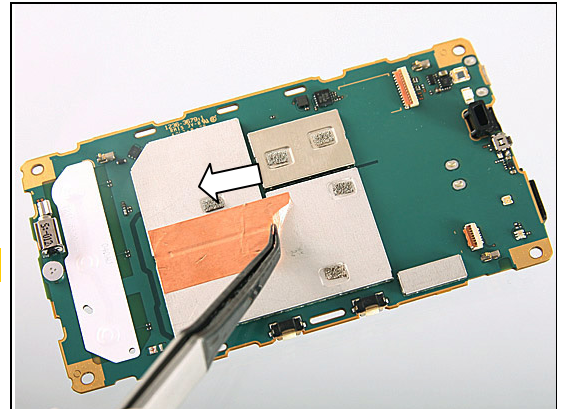
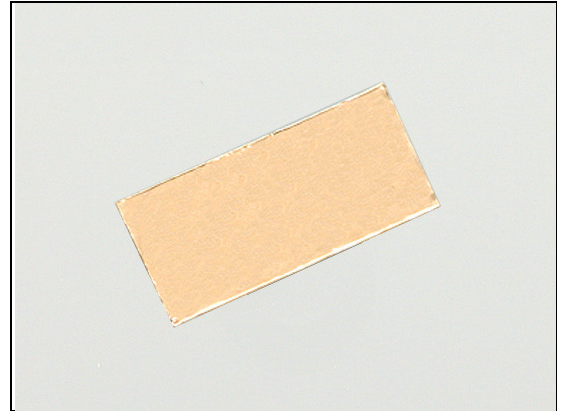
4.6 Adhesive Conductive Copper

*Follow the 3.1 – 3.3 Disassembly instructions.
Prepare the new Adhesive Conductive Copper.
Follow the 5.3 – 5.5 Reassembly instructions.*

REMOVAL

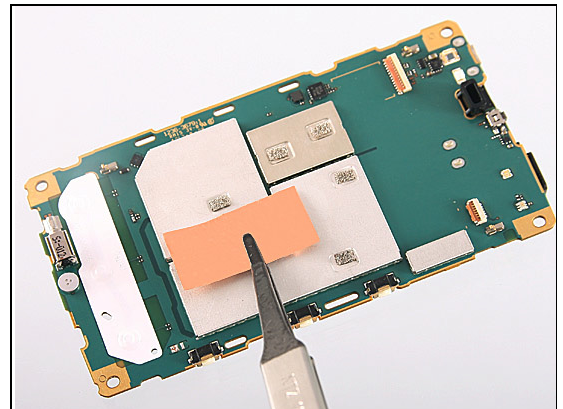
Detach the Adhesive Conductive Copper.

Scrap the adhesive, it shall not be reused.

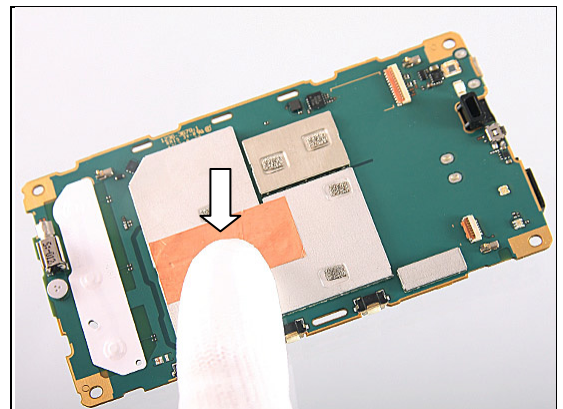


INSTALLATION

Align and mount a new Adhesive Conductive Copper tape at the Shield Can Lids.



Press to secure its attachment.





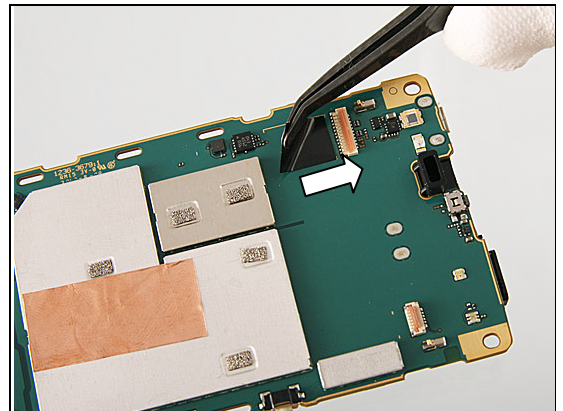
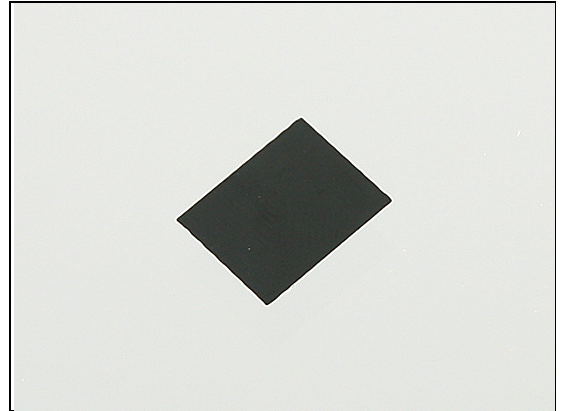
Replacement

4.7 Adhesive FPC Display

*Follow the 3.1 – 3.3 Disassembly instructions.
Prepare the new Adhesive FPC Display.
Follow the 5.3 – 5.5 Reassembly instructions.*

REMOVAL

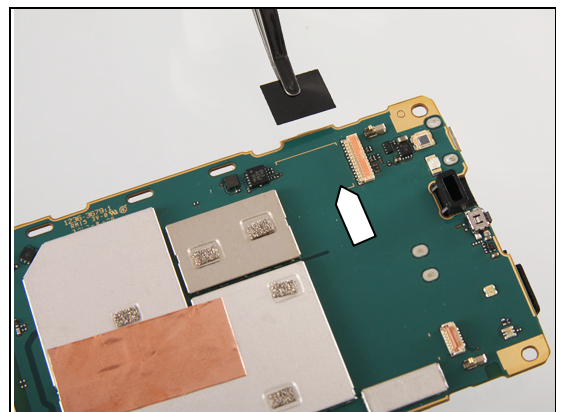
Detach the Adhesive FPC Display.



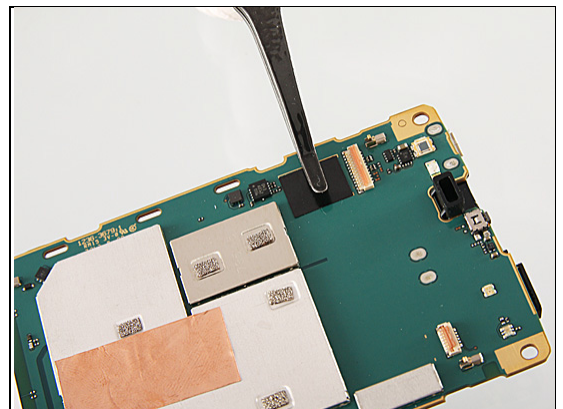
INSTALLATION

Mount a new Adhesive FPC Display.

Align with the lines on the Main PBA.



Press to secure its attachment.





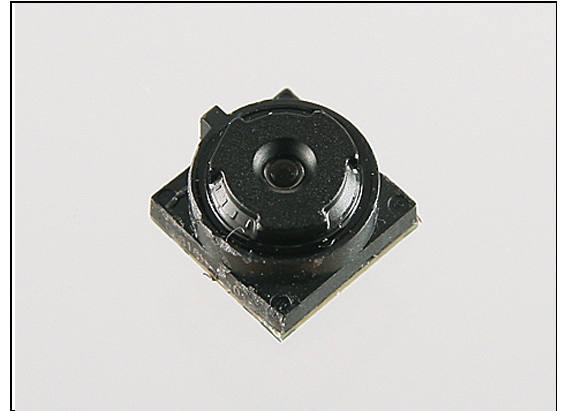
Replacement

4.8 Camera 3 MPixel

Follow the 3.1 – 3.2 Disassembly instructions.

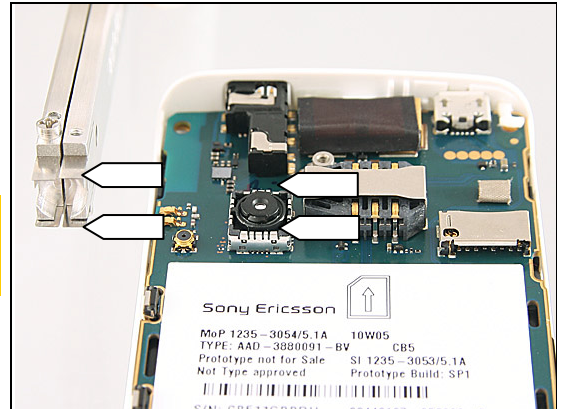
Prepare the new Camera 3 MPixel.

Follow the 5.4 – 5.5 Reassembly instructions.

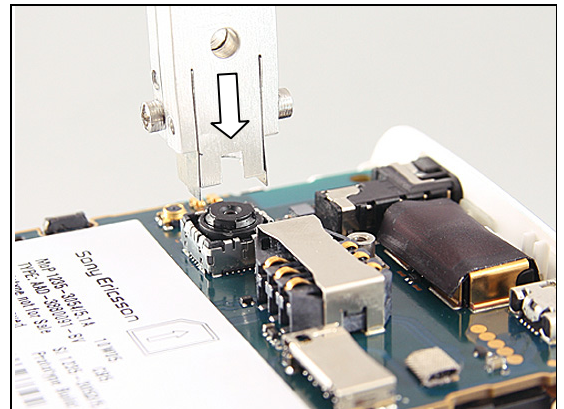


REMOVAL

Note the orientation of the blades on the Camera Removal Tool in relation to the position of the camera socket.



Insert the Camera Removal Tool into the camera socket.



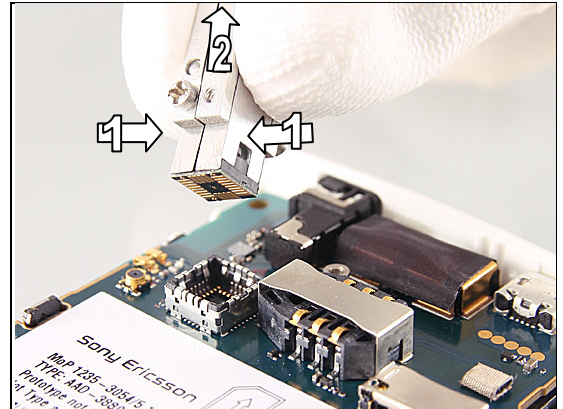
Push the Camera Removal Tool downwards to release the camera from its socket.





Replacement: Camera 3 MPixel

Grip (1) the Camera Removal Tool and lift (2) straight up to release the Camera 3 MPixel from the socket.

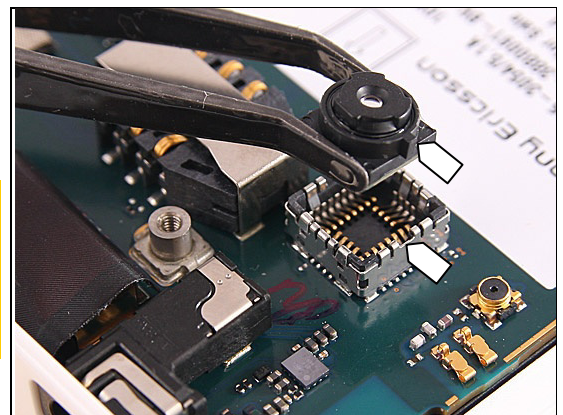


INSTALLATION

Mount the Camera 3 MPixel in the socket.

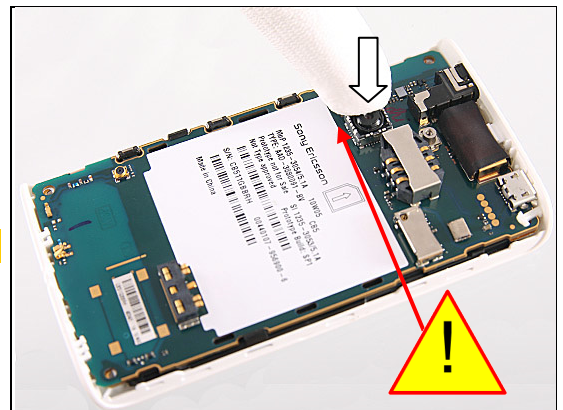
Note the orientation of the guiding bolt of the camera and its socket.

Make sure that camera module's pads and connector pins of camera socket are very clean! If dirty or dusty, blow off or clean it!



Press the Camera to the bottom of the socket to secure its position.

Do not touch the camera lens.



Replacement

4.9 Cap USB

Prepare the new Cap USB.



REMOVAL

Open the Cap USB.



Pull to remove it from the cavity.



INSTALLATION

Mount the Cap USB.



Replacement: Cap USB

Insert the tail of the Cap USB into the cavity.



Press to snap it.



Replacement

4.10 Co Brand

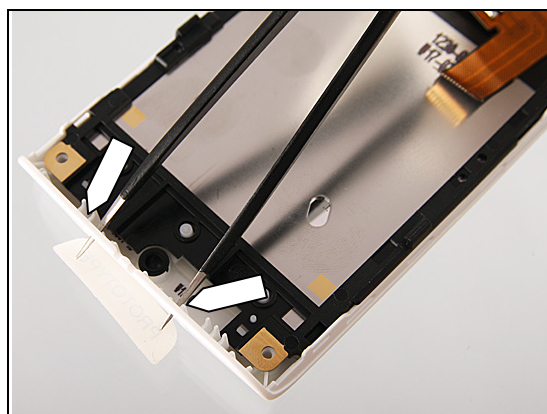
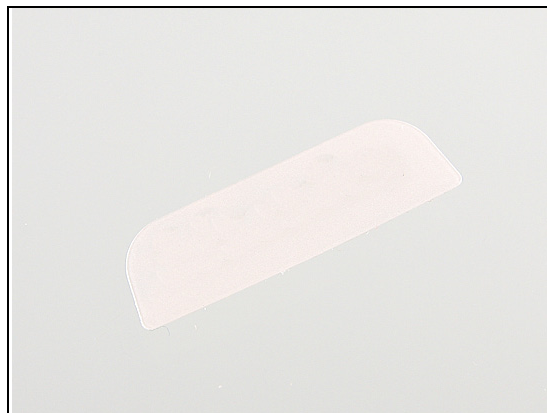
Follow the 3.1 – 3.3 Disassembly instructions.

Prepare the new Co Brand.

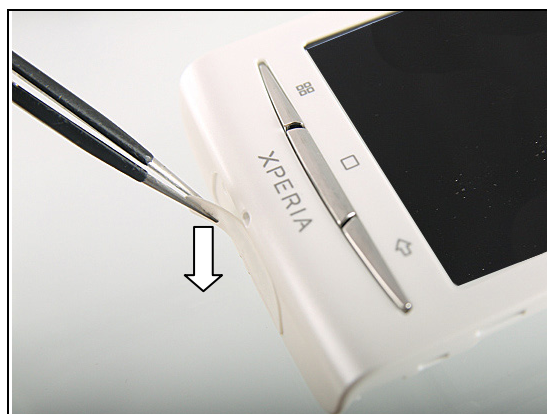
Follow the 5.3 – 5.5 Reassembly instructions.

REMOVAL

Push from the hole on the inside of the Cover Front assy with a pair of Tweezers.



Detach the Co Brand gently.
Be careful not to scratch the front.



INSTALLATION

Mount a new Co Brand.



Replacement: Co-Brand

Press to secure its attachment.



Replacement

4.11 Dome Sheet

Follow the 3.1 – 3.3 Disassembly instructions.

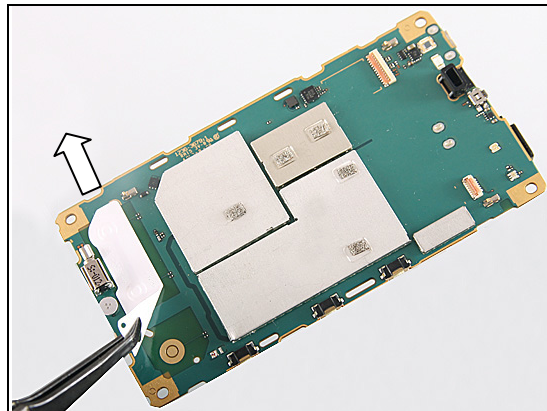
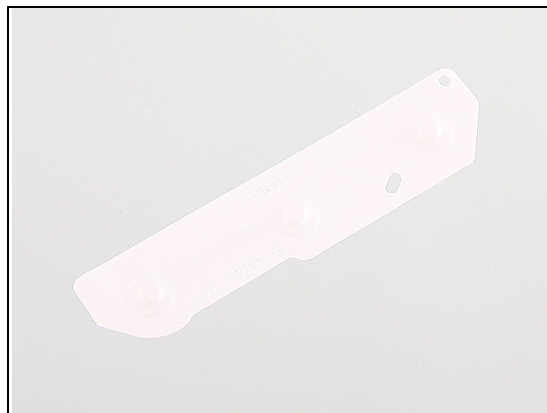
Prepare the new Dome Sheet.

Follow the 5.3 – 5.5 Reassembly instructions.

REMOVAL

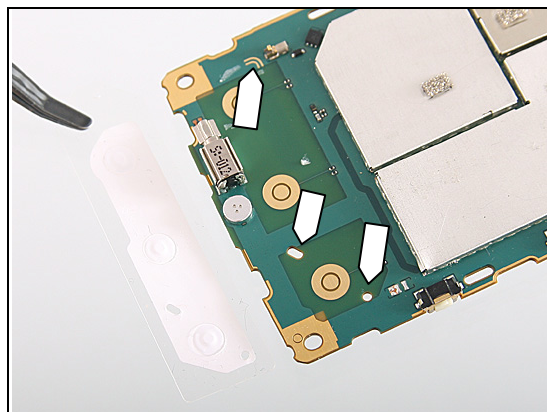
Detach the Dome Sheet.

Scrap the Dome Sheet, it shall not be reused.

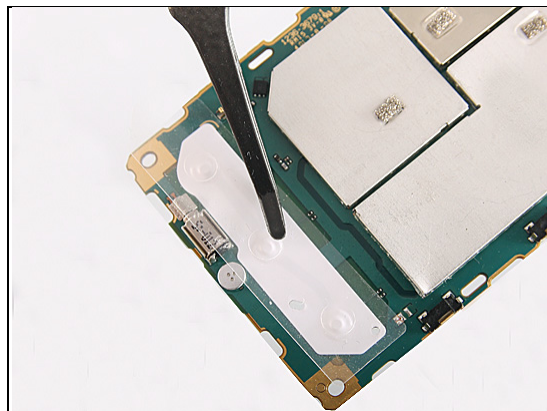


INSTALLATION

Use the two guiding holes and the double-line mark to align a new Dome Sheet.



Press with your fingers to activate the adhesive.



Replacement

4.12 Earspeaker

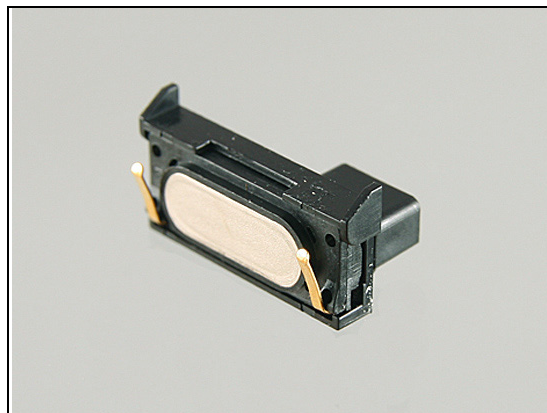
Follow the 3.1 – 3.3 Disassembly instructions.

Follow the 4.24 Removal instructions.

Prepare the Earspeaker.

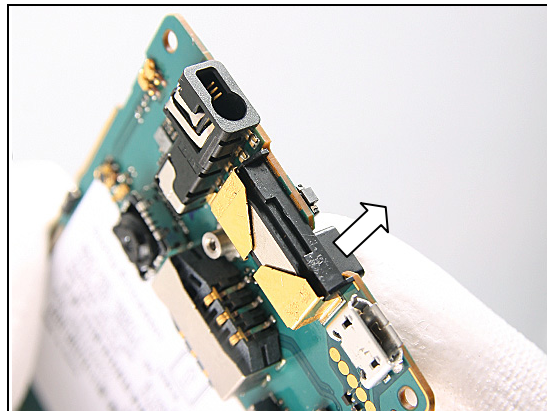
Follow the 4.24 Installation instructions.

Follow the 5.3 – 5.5 Reassembly instructions.



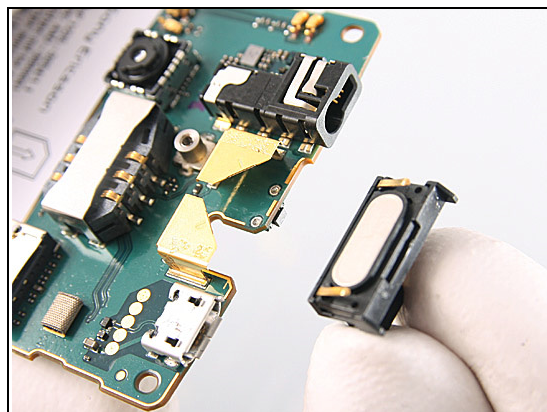
REMOVAL

Push the Earspeaker upwards from the other side.

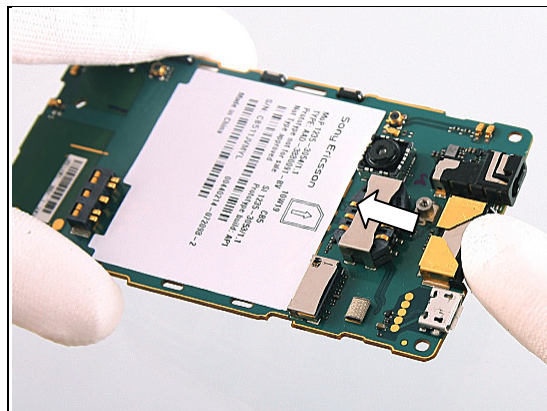


INSTALLATION

Mount the Earspeaker.



Push the Earspeaker into the socket.





Replacement

4.13 Front Key Activator

Follow the 3.1 – 3.4 Disassembly instructions.

Prepare the new Front Key Activator.

Follow the 5.2 – 5.5 Reassembly instructions.

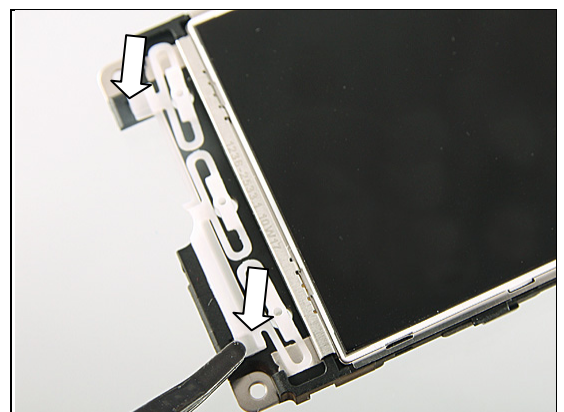
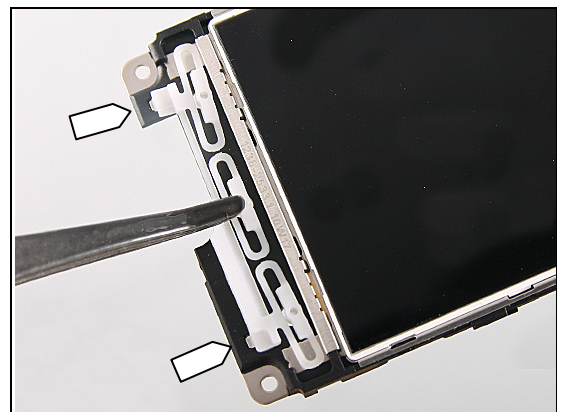
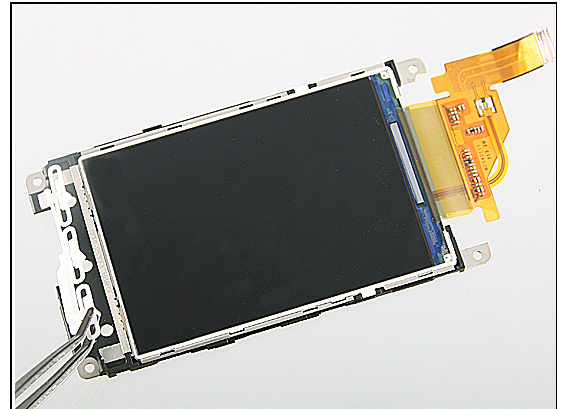
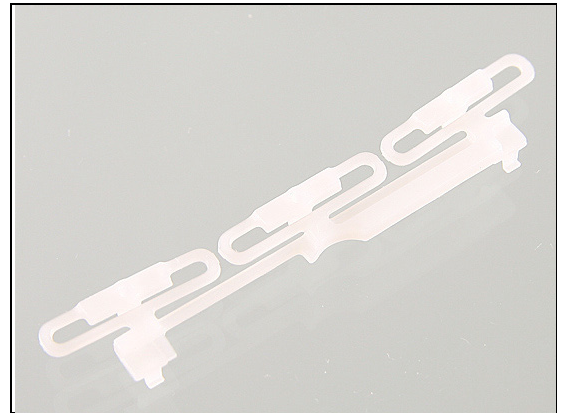
REMOVAL

Remove the Front Key Activator with the Flex Film Assembly Tool.

INSTALLATION

Use the guiding holes to align the Front Key Activator.

Press to snap the two hooks.



Replacement

4.14 Gasket Camera

Follow the 3.1 Disassembly instructions.

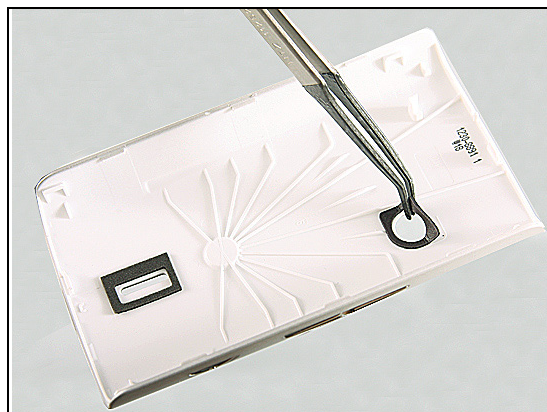
Prepare the new Gasket Camera.

Follow the 5.5 Reassembly instructions.

REMOVAL

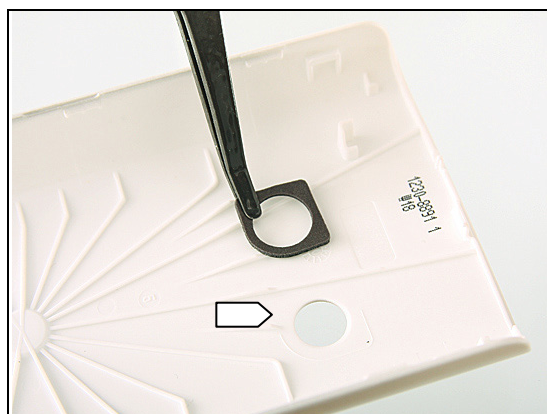
Detach the Gasket Camera with the Flex Film Assembly Tool.

Scrap the gasket, it shall not be reused.



INSTALLATION

Mount a new Gasket Camera.



Press to secure its attachment.





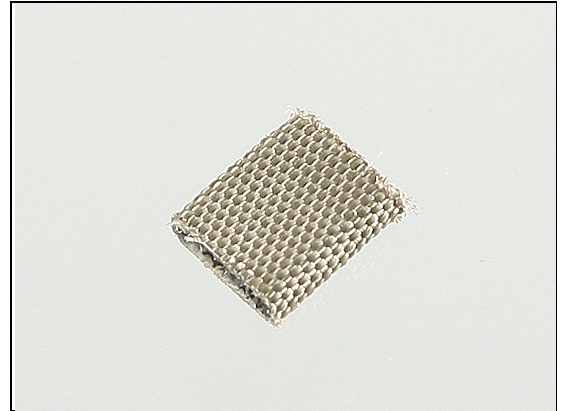
Replacement

4.15 Gasket Conductive 3 x 4

Follow the 3.1 – 3.2 Disassembly instructions.

Prepare the Gasket Conductive 3 x 4.

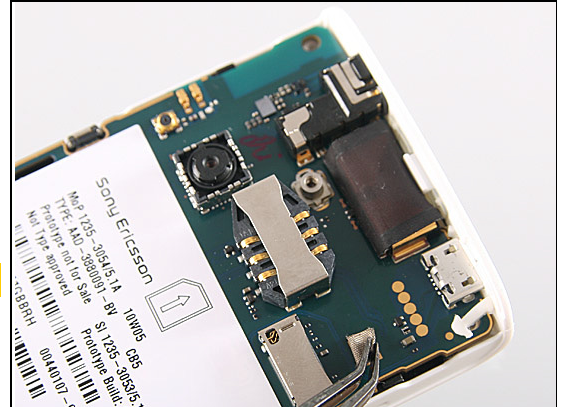
Follow the 5.2 – 5.5 Reassembly instructions.



REMOVAL

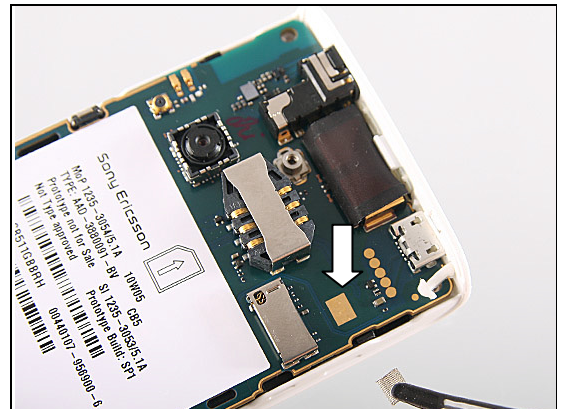
Detach the Gasket Conductive 3 x 4 with the Flex Film Assembly Tool.

Scrap the gasket, it shall not be reused.

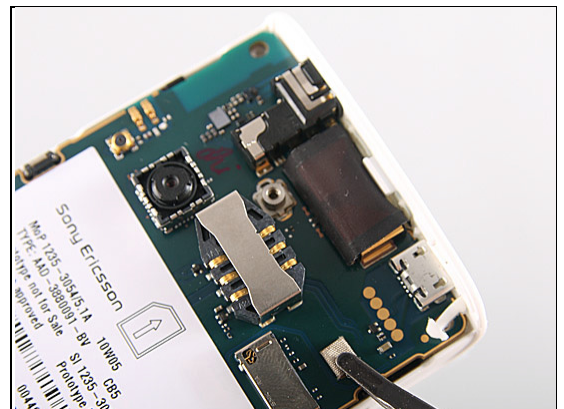


INSTALLATION

Mount a new Gasket Conductive 3 x 4.



Press to secure its attachment.



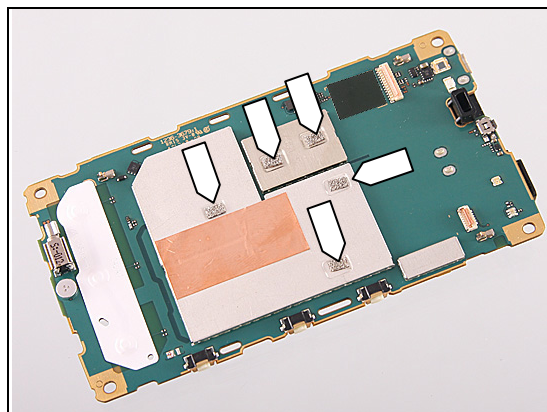
Replacement

4.16 Gasket Conductive 3,8x2,3

Follow the 3.1 – 3.3 Disassembly instructions.
 Prepare the new Gasket Conductive 3,8 x 2,3.
Follow the 5.3 – 5.5 Reassembly instructions.



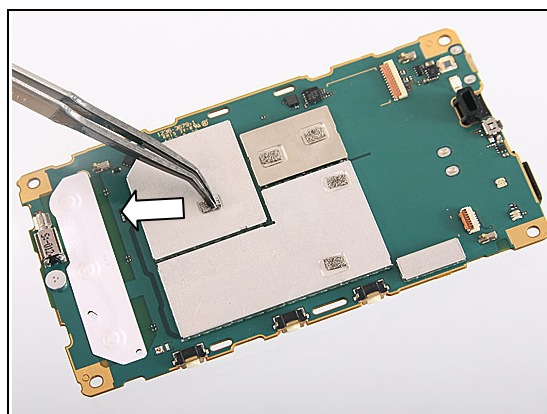
There are five Gasket Conductive 3,8 x 2,3.



REMOVAL

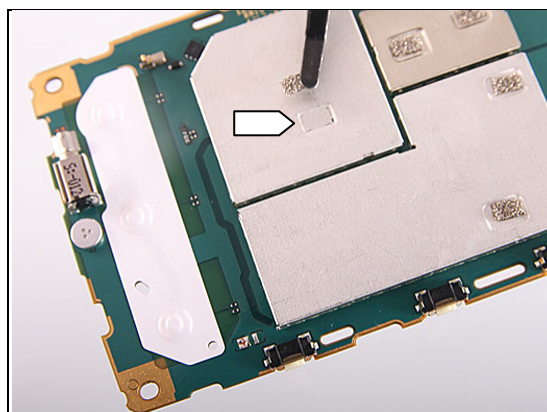
Detach the Gasket Conductive 3,8 x 2,3 with the Flex Film Assembly Tool.

Scrap the gaskets, they shall not be reused.



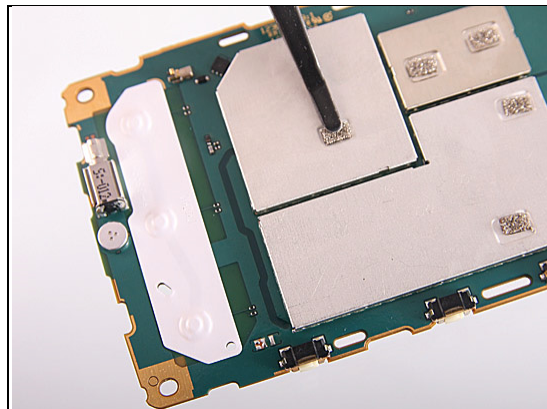
INSTALLATION

Mount a new Gasket Conductive 3,8 x 2,3.



Replacement: Gasket Conductive 3,8x2,3

Press all five to secure theirs attachment.



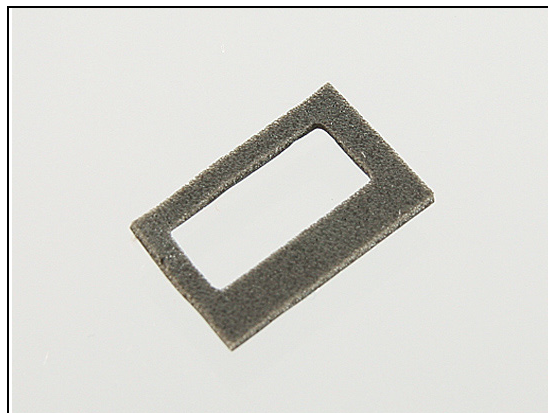
Replacement

4.17 Gasket Loudspeaker

*Follow the 3.1 Disassembly instructions.
Prepare the new Gasket Loudspeaker.
Follow the 5.5 Reassembly instructions.*

REMOVAL

Detach the Gasket Loudspeaker with the Flex Film Assembly Tool.



INSTALLATION

Mount the new Gasket Loudspeaker.



Press to secure its attachment.





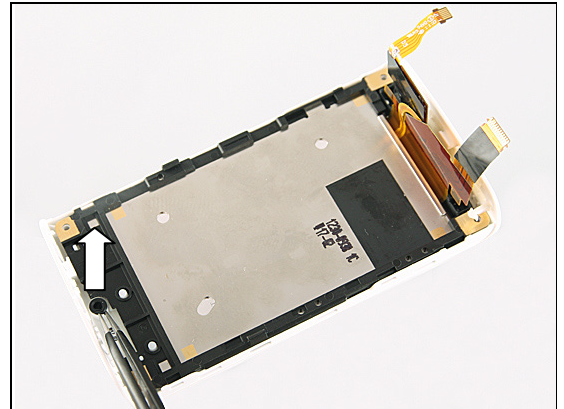
Replacement

4.18 Grommet Mic

*Follow the 3.1 – 3.3 Disassembly instructions.
Prepare the new Grommet Mic.
Follow the 5.3 – 5.5 Reassembly instructions.*

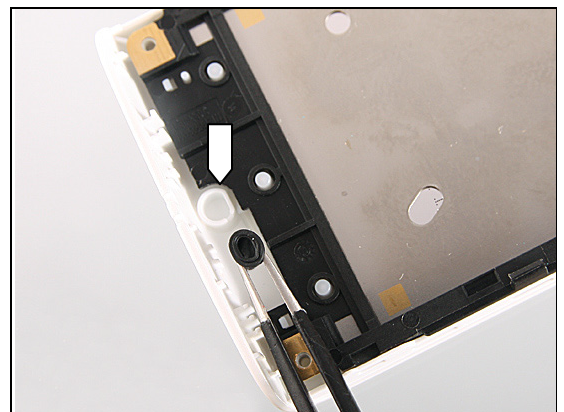
REMOVAL

Pull off the Grommet Mic with a pair of Tweezers.

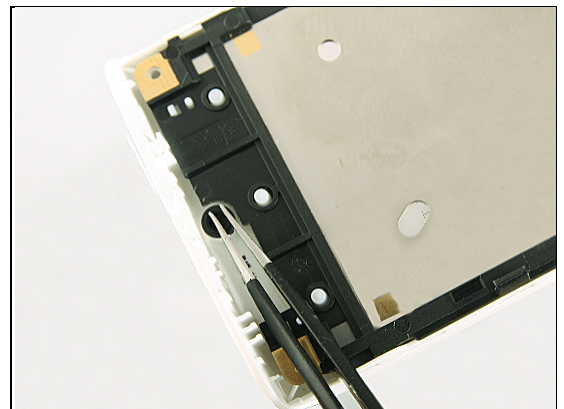


INSTALLATION

Mount a new Grommet Mic.



Press to secure its position.



Replacement

4.19 Keys Front

Follow the 3.1 – 3.4 Disassembly instructions.

Prepare the new Keys Front.

Follow the 5.2 – 5.5 Reassembly instructions.

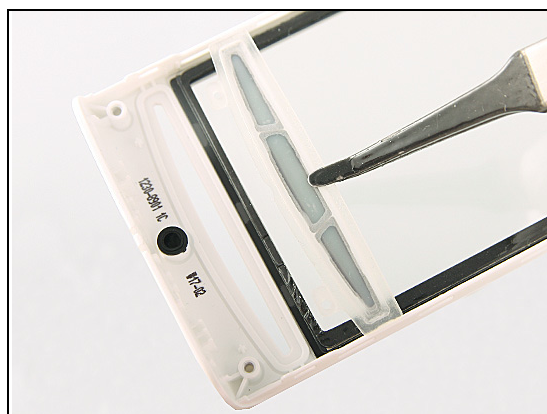
REMOVAL

Detach the Keys Front with the Flex Film Assembly Tool.

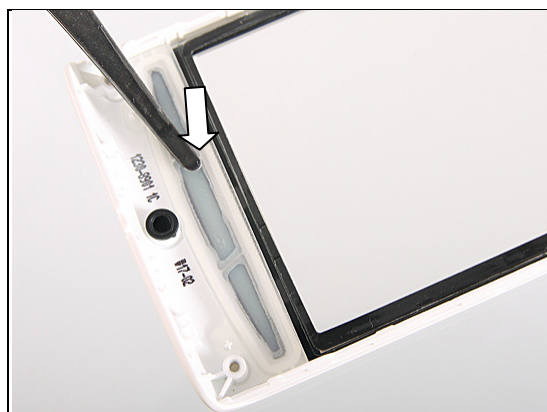


INSTALLATION

Align a new Keys Front.



Press to secure its position.



Replacement

4.20 Keys Side

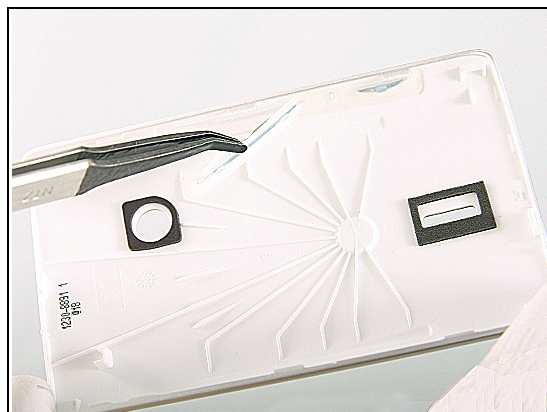
Follow the 3.1 Disassembly instructions.

Prepare the new Keys Side.

Follow the 5.5 Reassembly instructions.

REMOVAL

Detach the Keys Side with the Flex Film Assembly Tool.

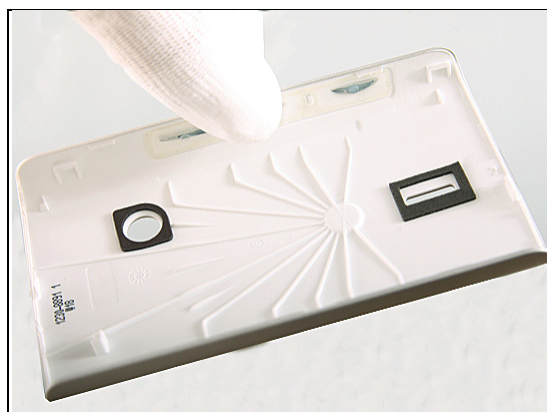


INSTALLATION

Mount new Keys Side, align to the guiding holes.



Press to secure its position.



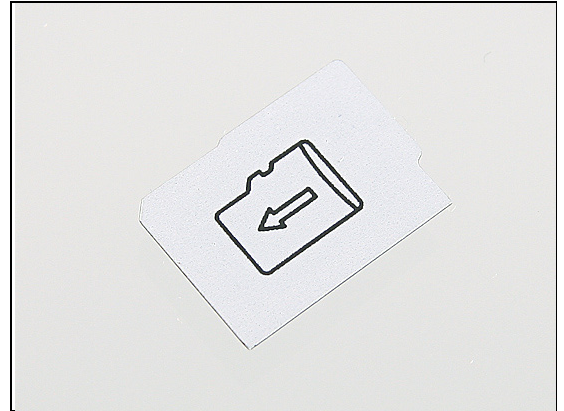
Replacement

4.21 Label MicroSD

*Follow the 3.1 Disassembly instructions.
Prepare the new Label MicroSD.
Follow the 5.5 Reassembly instructions.*

REMOVAL

Detach the Label MicroSD with the Flex Film Assembly Tool.



INSTALLATION

Mount a new Label MicroSD.



Press to secure its attachment.





Replacement

4.22 Label Mobile Phone

*Follow the 3.1 Disassembly instructions.
Prepare the new Label Mobile Phone.
Follow the 5.5 Reassembly instructions.*

REMOVAL

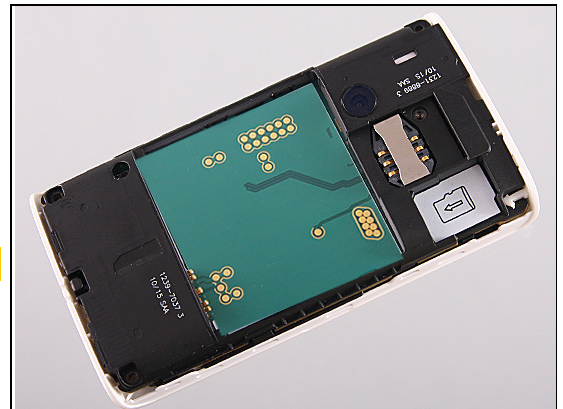
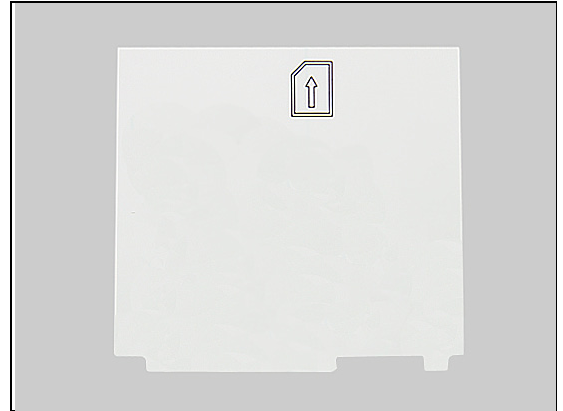
Read the old Label MobilePhone and write the information into the 'LabelMake' program before removal.
Carefully remove the Label by using the Flex Film Assembly Tool.

INSTALLATION

Check that the label format is loaded in the Zebra printer and write a new Label by using the 'Label Make' software.

One label only is allowed!

Press the new Label Mobile Phone on the Main PBA.



Replacement

4.23 Liquid Indicator

INSPECTION

Check whether the Liquid Indicator has been activated (reddish color).

If activated:

Follow the 3.1 – 3.2 Disassembly instructions.

Prepare the new Liquid Indicator.

Follow the 5.4 – 5.5 Reassembly instructions.

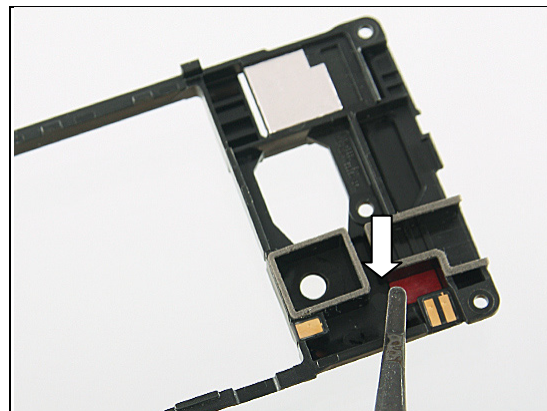
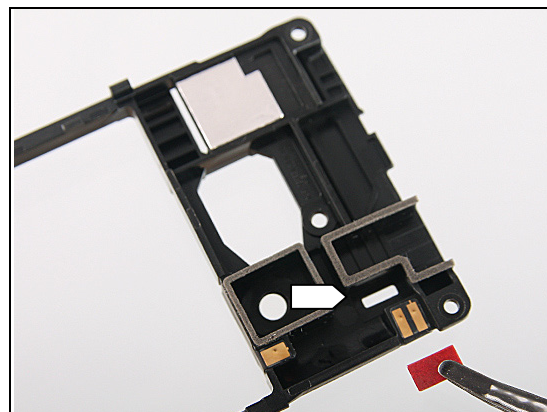
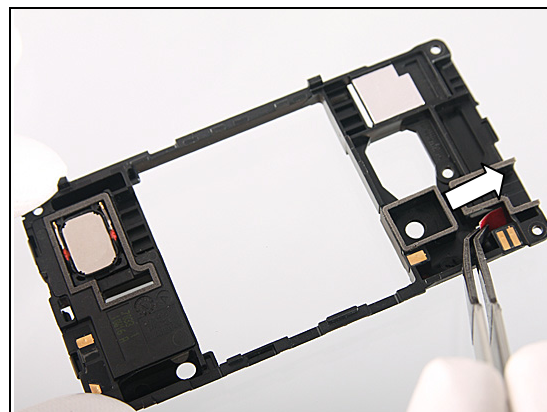
REMOVAL

Detach the Liquid Indicator with the Flex Film Assembly Tool.

INSTALLATION

Install a new Liquid Indicator.

Press to secure its attachment.





Replacement

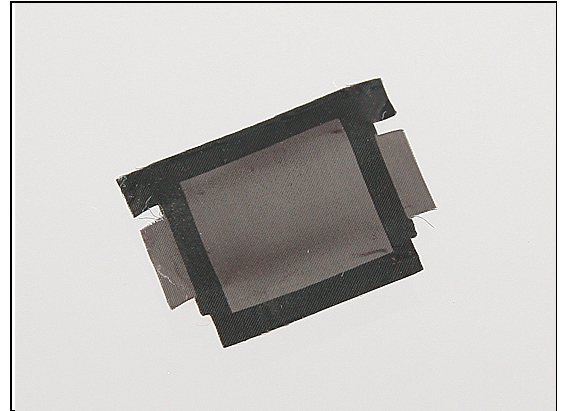
4.24 Mesh Earspeaker

Follow the 3.1 – 3.3 Disassembly instructions.
Prepare the new Mesh Earspeaker.
Follow the 5.3 – 5.5 Reassembly instructions.

REMOVAL

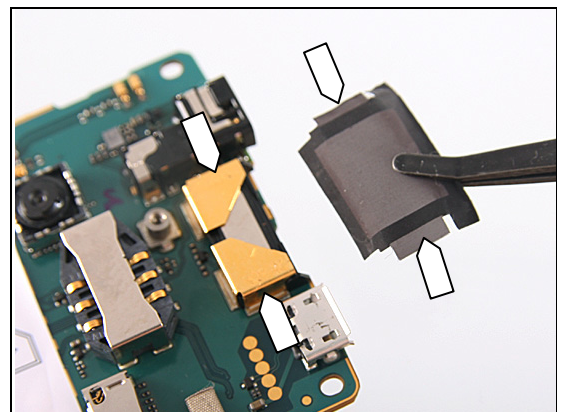
Peel off the Mesh Earspeaker with the Flex Film Assembly Tool.

Scrap the mesh, it shall not be reused.

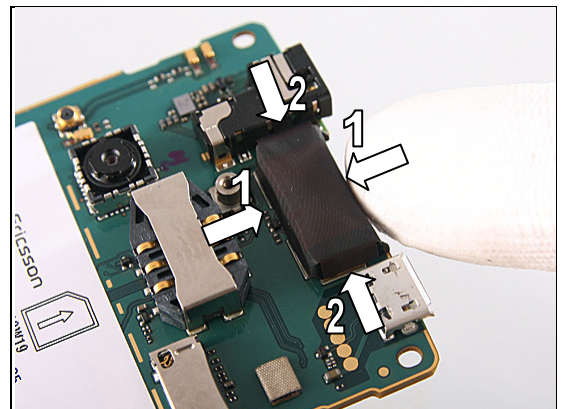


INSTALLATION

Mount a new Mesh Earspeaker.



Press around to secure its attachment.



Replacement

4.25 SAR Shield 1/2/5

Follow the 3.1 – 3.4 Disassembly instructions.

Follow the 4.13 Removal instructions.

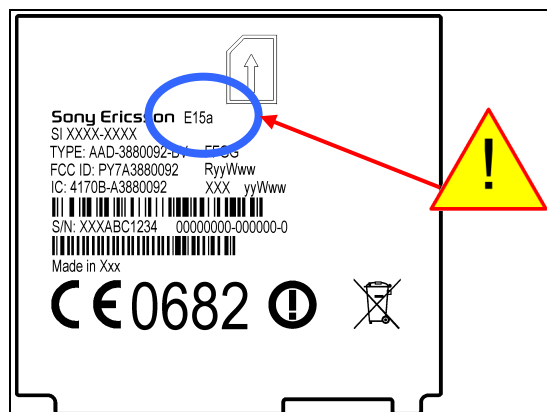
Prepare the new SAR Shield 1/2/5.

Follow the 4.13 Installation instructions.

Follow the 5.2 – 5.5 Reassembly instructions.

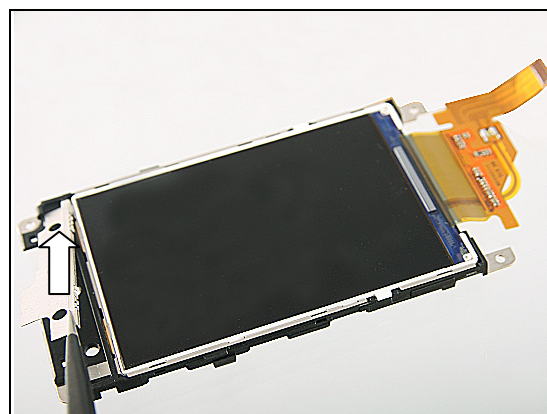
Apply SAR Shield 1/2/5 only in E15a units.

Use SAR Shield 1/8 for E15i units, see next chapter.



REMOVAL

Remove the SAR Shield 1/2/5 with a pair of Tweezers.

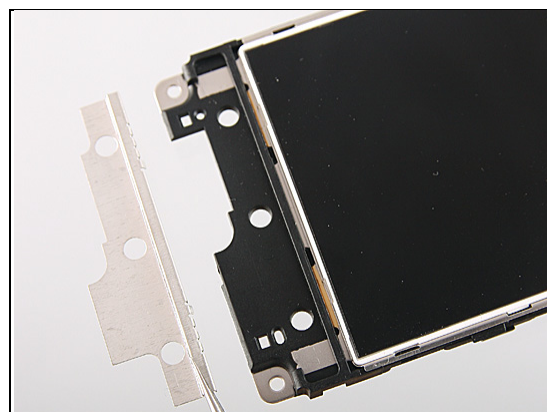


INSTALLATION

Align and mount the new SAR Shield 1/2/5.

Use the guiding holes.

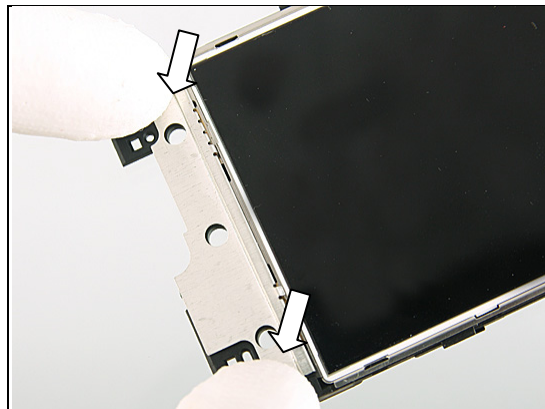
Do not touch the front of Display 3.0 TFT.



Replacement: SAR Shield 1/2/5

Press to activate the adhesive.

Do not touch the front of Display 3.0 TFT.



Replacement

4.26 SAR Shield 1/8

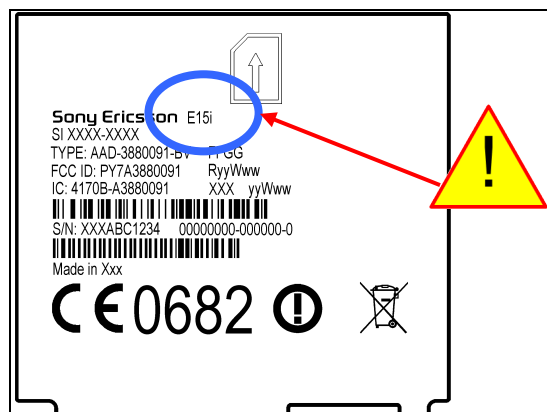
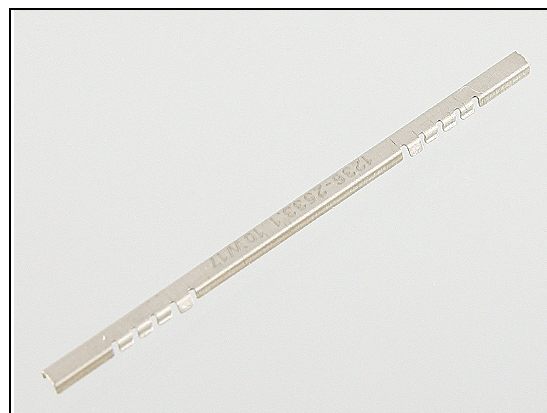
Follow the 3.1 – 3.4 Disassembly instructions.

Prepare the new SAR Shield 1/8.

Follow the 5.2 – 5.5 Reassembly instructions.

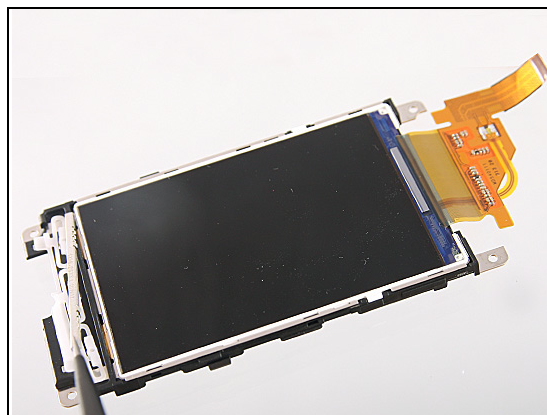
Apply SAR Shield 1/8 only in E15i units.

Use SAR Shield 1/2/5 for E15a units, see previous chapter.



REMOVAL

Remove the SAR Shield 1/8 with a pair of Tweezers.



INSTALLATION

Mount the new SAR Shield 1/8.

Note the direction of the springs.

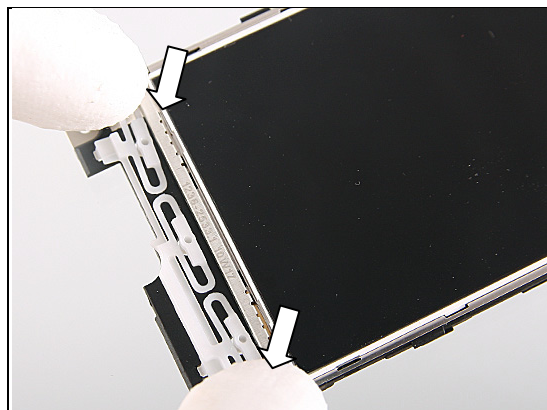
Do not touch the front of Display 3.0 TFT.



Replacement: SAR Shield 1/8

Press to secure its position.

Do not touch the front of Display 3.0 TFT.



Replacement

4.27 Shield Can Lid BB

Follow the 3.1 – 3.3 Disassembly instructions.

Follow the 4.6 Removal instructions.

Prepare the new Shield Can Lid BB.

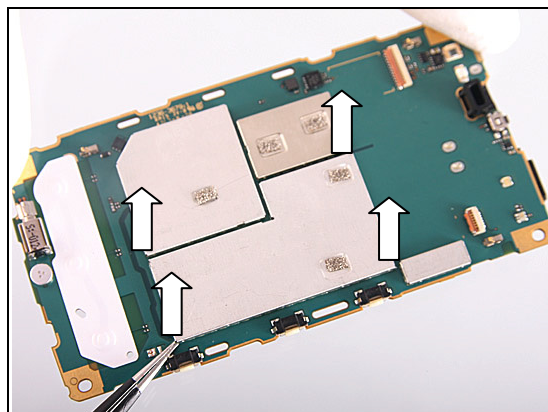
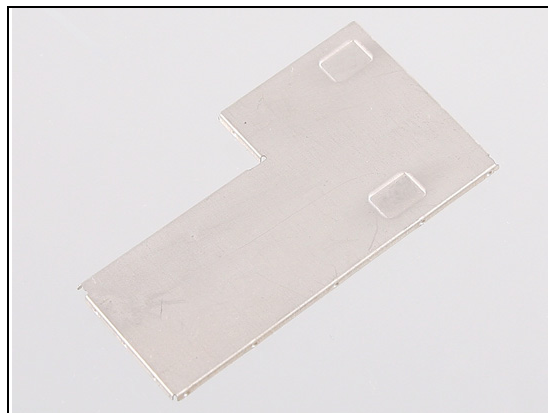
Follow the 4.16 Installation instructions.

Follow the 4.6 Installation instructions.

Follow the 5.3 – 5.5 Reassembly instructions.

REMOVAL

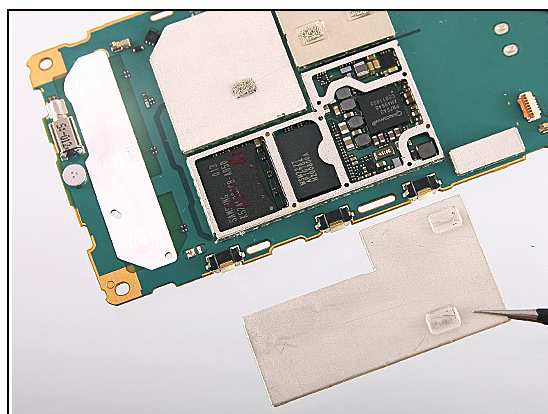
Unsnap the corners of the Shield Can Lid BB with a pair of Tweezers and remove it.



INSTALLATION

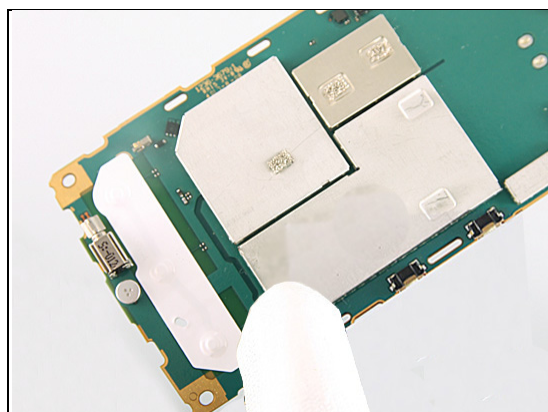
Mount a new Shield Can Lid BB.

Scrap the Shield Can Lid, it shall not be reused.



Press to snap it.

**Press only on the edges of the Shield Can Lid.
Not in the middle of the Shield Can Lid.**





Replacement

4.28 Shield Can Lid LNA

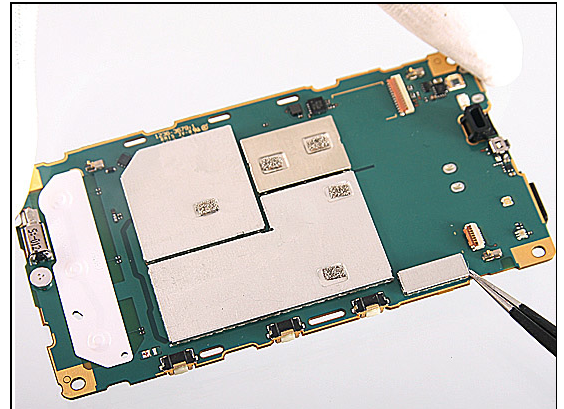
Follow the 3.1 – 3.3 Disassembly instructions.

Prepare the new Shield Can Lid LNA.

Follow the 5.3 – 5.5 Reassembly instructions.

REMOVAL

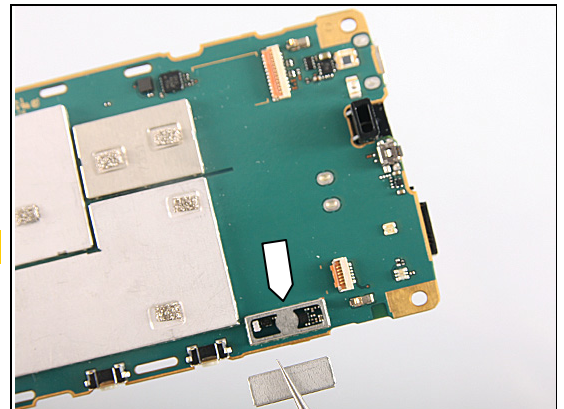
Unsnap the corners of the Shield Can Lid LNA with a pair of Tweezers and remove it.



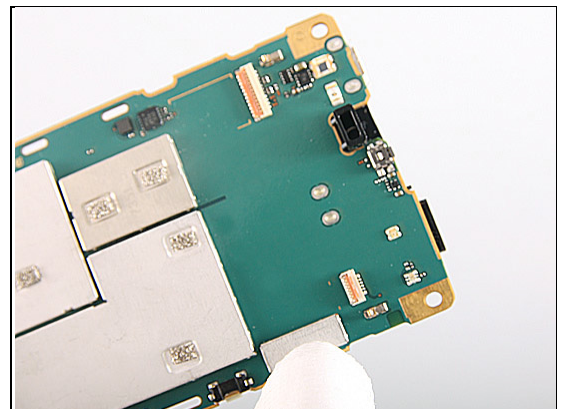
INSTALLATION

Mount a new Shield Can Lid LNA.

Scrap the Shield Can Lid, it shall not be reused.



Press to snap it.





Replacement

4.29 Shield Can Lid Radio

Follow the 3.1 – 3.3 Disassembly instructions.

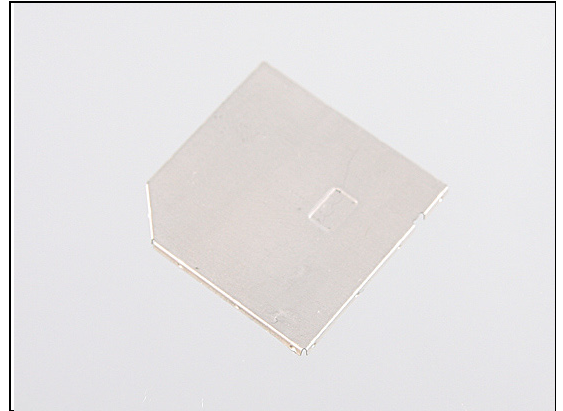
Follow the 4.6 Removal instructions.

Prepare the new Shield Can Lid Radio.

Follow the 4.16 Installation instructions.

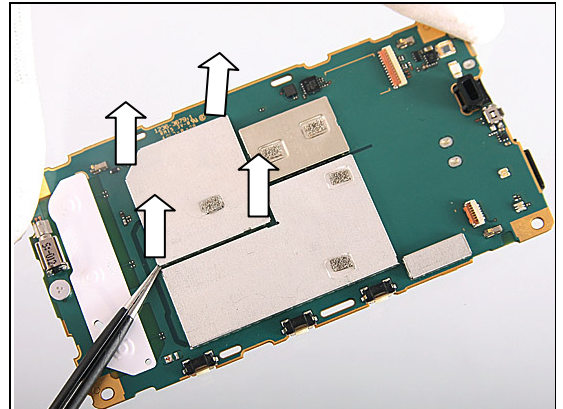
Follow the 4.6 Installation instructions.

Follow the 5.3 – 5.5 Reassembly instructions.



REMOVAL

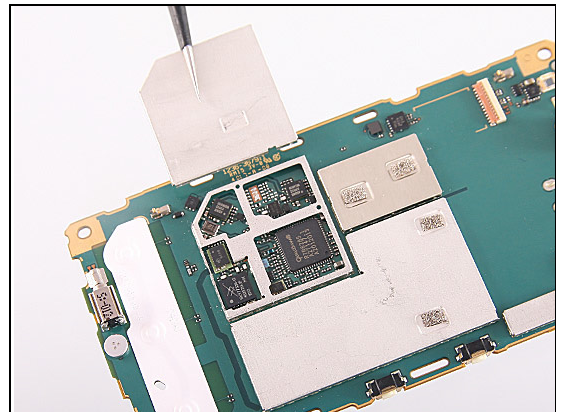
Unsnap the corners of the Shield Can Lid Radio with a pair of Tweezers and remove it.



INSTALLATION

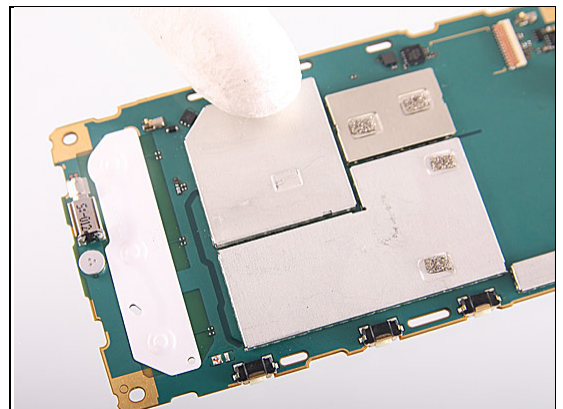
Mount a new Shield Can Lid Radio.

Scrap the Shield Can Lid, it shall not be reused.



Press to snap it.

**Press only on the edges of the Shield Can Lid.
Not in the middle of the Shield Can Lid.**





Replacement

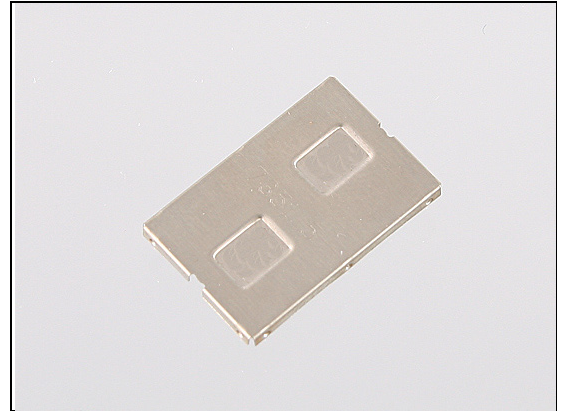
4.30 Shield Can Lid WLAN

Follow the 3.1 – 3.3 Disassembly instructions.

Prepare the new Shield Can Lid WLAN.

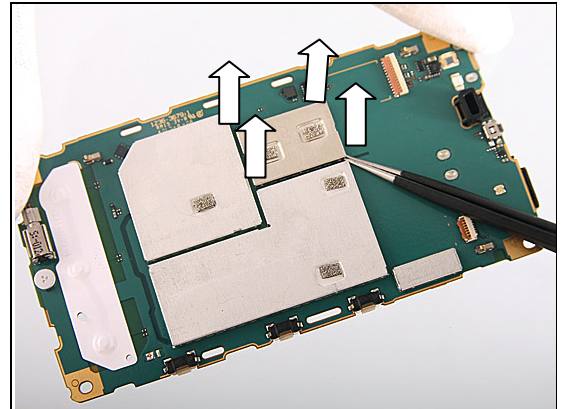
Follow the 4.16 Installation instructions.

Follow the 5.3 – 5.5 Reassembly instructions.



REMOVAL

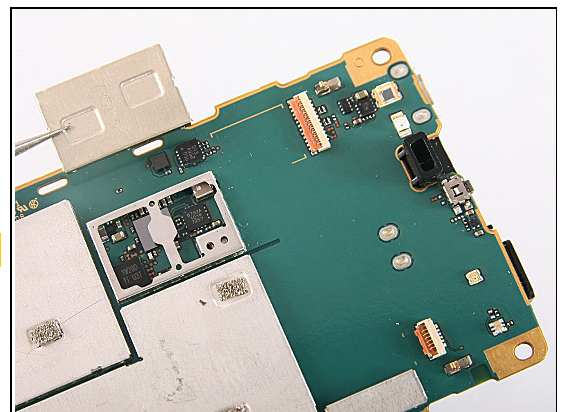
Unsnap the corners of the Shield Can Lid WLAN with a pair of Tweezers and remove it.



INSTALLATION

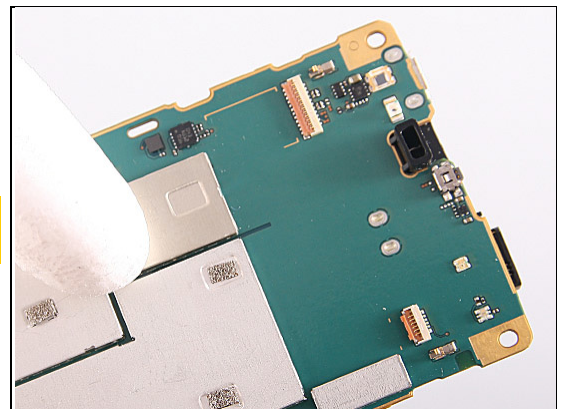
Mount a new Shield Can Lid WLAN.

Scrap the Shield Can Lid, it shall not be reused.



Press to snap it.

**Press only on the edges of the Shield Can Lid.
Not in the middle of the Shield Can Lid.**



Replacement

4.31 Speaker & Adhesive Loudspeaker

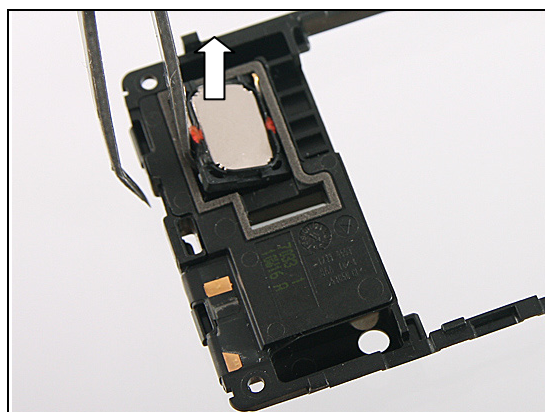
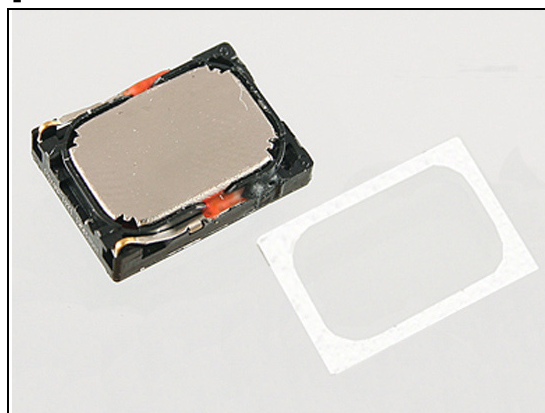
Follow the 3.1 – 3.2 Disassembly instructions.
Prepare the new Speaker and a new Adhesive Loudspeaker.
Follow the 5.4 – 5.5 Reassembly instructions.

REMOVAL

Detach the Speaker with the Flex Film Assembly Tool.

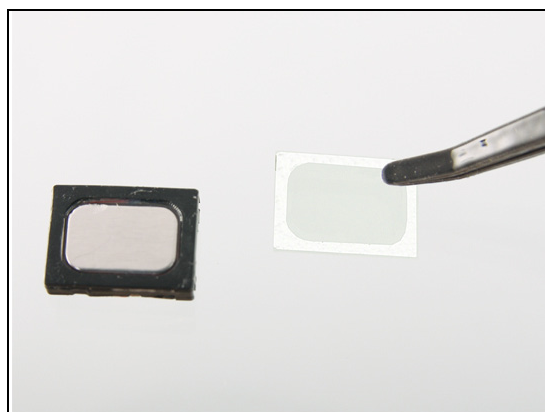
Scrap the adhesive, it shall not be reused.

Remove all remains of the adhesive.



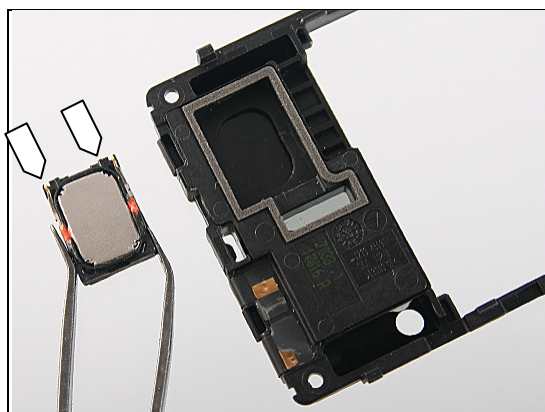
INSTALLATION

Mount a new Adhesive Loudspeaker on the Speaker.



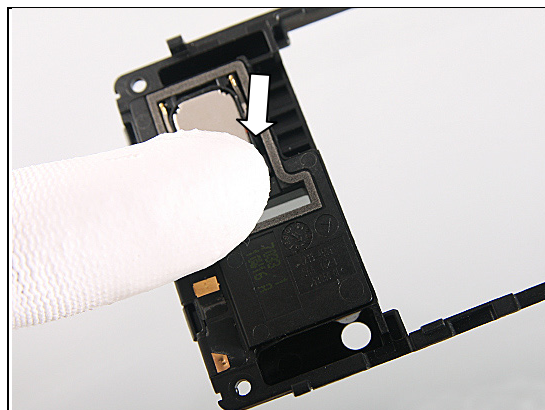
Place the Speaker into the cavity.

Check the two pin's direction.



Replacement: Loudspeaker & Adhesive Loudspeaker

Press to secure its attachment.
Be careful not to deform the contact pins.



Replacement

4.32 Tape RF connector

*Follow the 3.1 Disassembly instructions.
Prepare the new Tape RF connector.
Follow the 5.5 Reassembly instructions.*

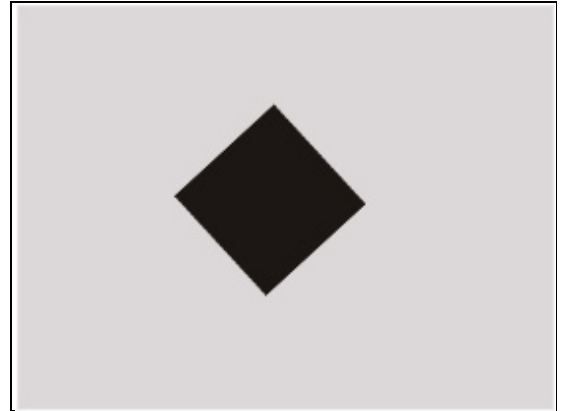
REMOVAL

Detach the Tape RF connector with the Flex Film Assembly Tool.

INSTALLATION

Mount a new Tape RF connector.
Press to secure its attachment

**Please mount a Tape RF connector on every unit.
Even the ones that don't have one before.**





Replacement

4.33 Window Camera & Adhesive Camera Window

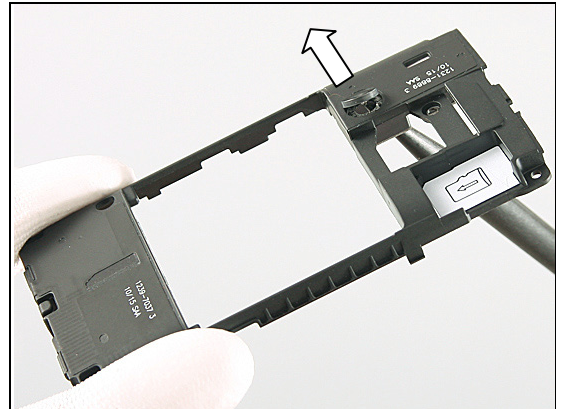
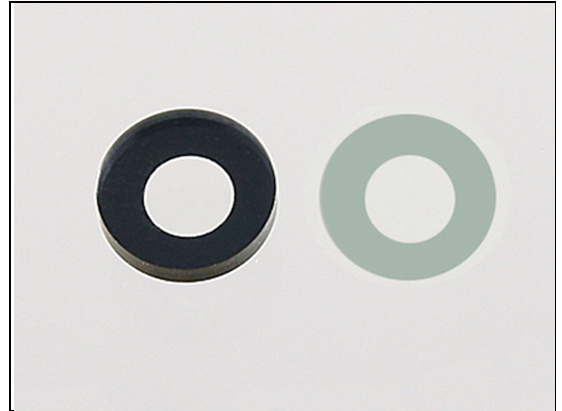
Follow the 3.1 – 3.2 Disassembly instructions.

Prepare the new Window Camera and a new Adhesive Camera Window.

Follow the 5.4 – 5.5 Reassembly instructions.

REMOVAL

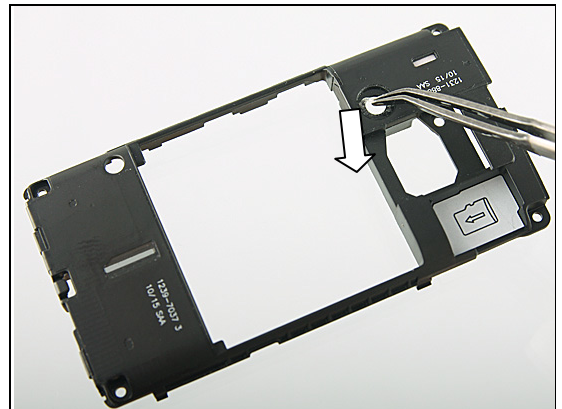
Push against the Window Camera from the back side by using a Nylon Pointer.



Peel off the Adhesive Window Camera.

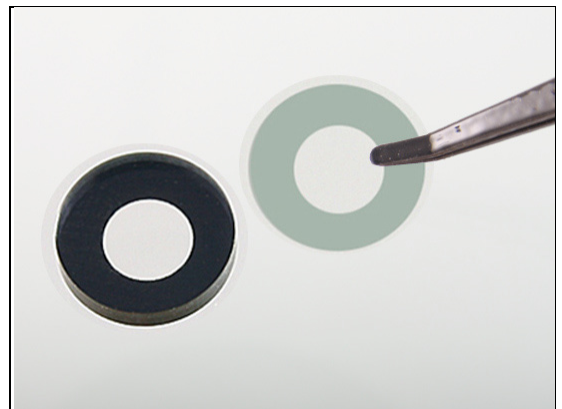
Scrap the adhesive, it shall not be reused.

Remove all remains of the adhesive.



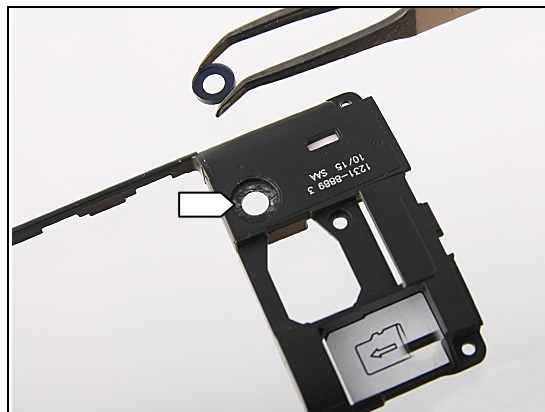
INSTALLATION

Install a new Adhesive Window Camera at the back of Window Camera.

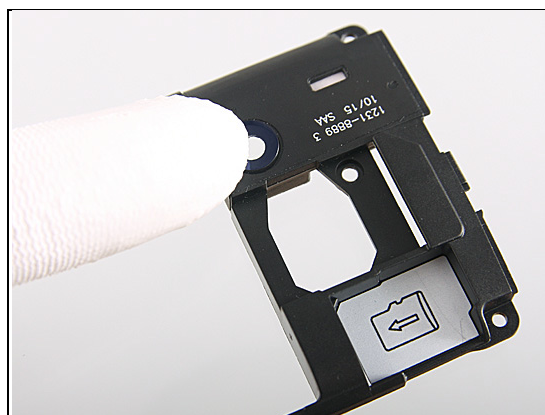


Replacement: Window Camera & Adhesive Camera Window

Mount the Window Camera in the cavity.



Press to secure the attachment.



Replacement

4.34 Board Swap - Replacement

Follow the 3.1 – 3.3 Disassembly instructions.

Follow the 4.8 and 4.12 Removal instructions.

Replace the Swap Board.

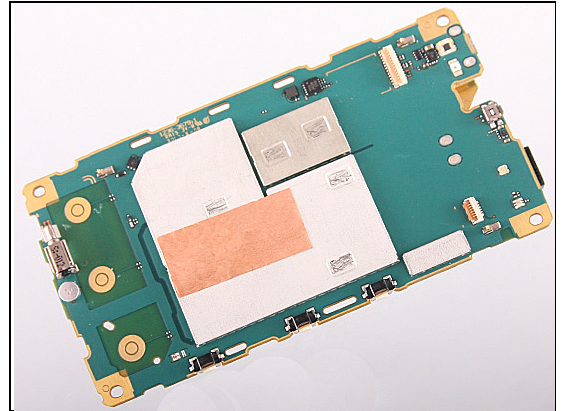
Reuse the Camera 3 MPixel and the Earspeaker

Follow the 4.7, 4.8, 4.11, 4.12 4.15 and 4.16 (5 pcs)

Installation instructions.

Follow the 5.3 – 5.5 Reassembly instructions.

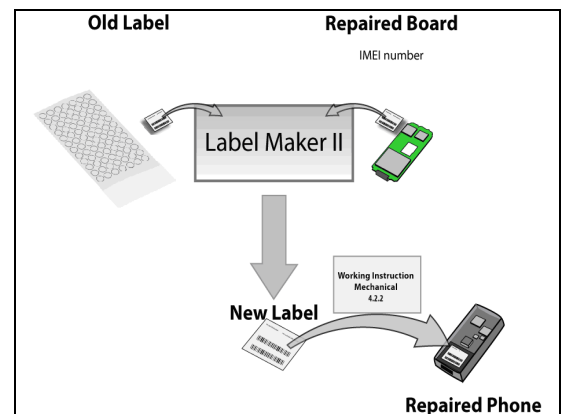
**Startup the unit to initialize settings, before performs
Customize Phone in Emma.**



4.35 Board Swap – Change Label

CHANGE LABEL

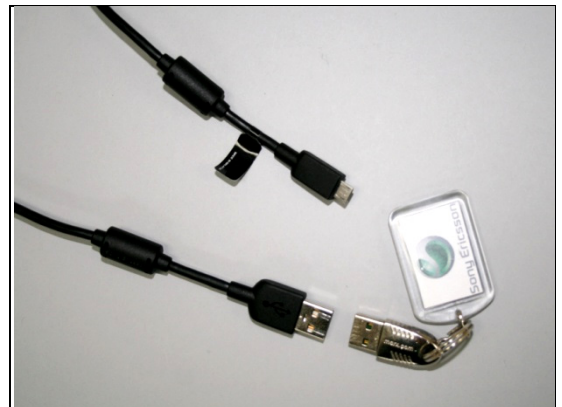
*Follow the instructions in the Generic Repair Manual –
Build swap for change of label.*



4.36 Board Swap – Customize of Software

CUSTOMIZE OF SOFTWARE

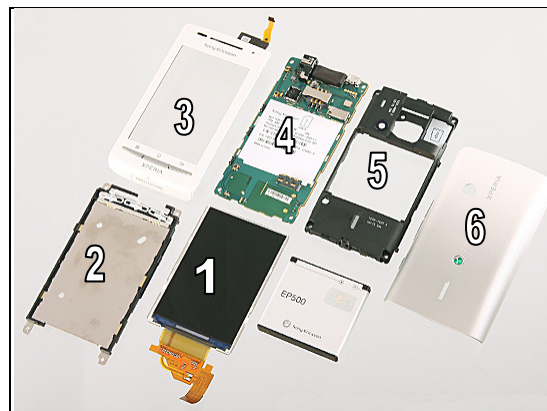
*Follow the instructions in the Generic Repair Manual –
Build swap for customization of the software.*



5 Reassembly

The reassembly is done in the following order:

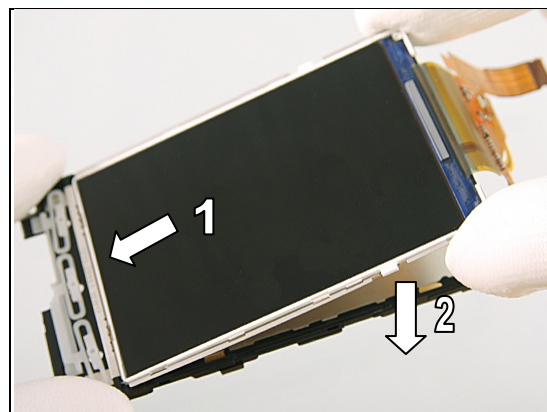
1. Display 3.0 TFT
2. Carrier LCM
3. Cover Front assy
4. Main PBA
5. Inner frame
6. Cover Rear



5.1 Carrier LCM & Display 3.0 TFT

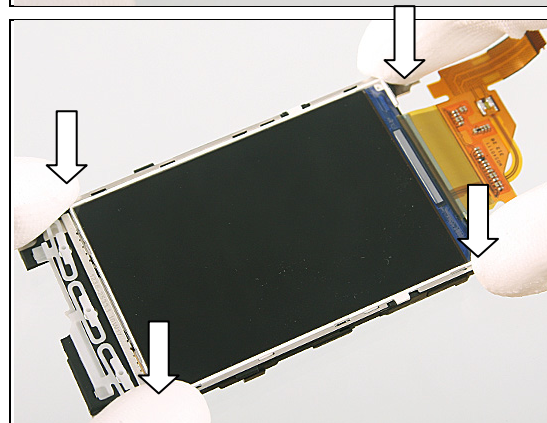
Place the Display 3.0 TFT into Carrier LCM.

Do not touch the front of Display 3.0 TFT.



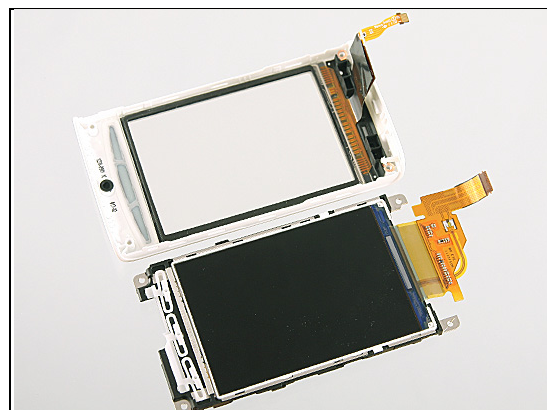
Press the corners with your fingers to secure its position.

Do not touch the front of Display 3.0 TFT.



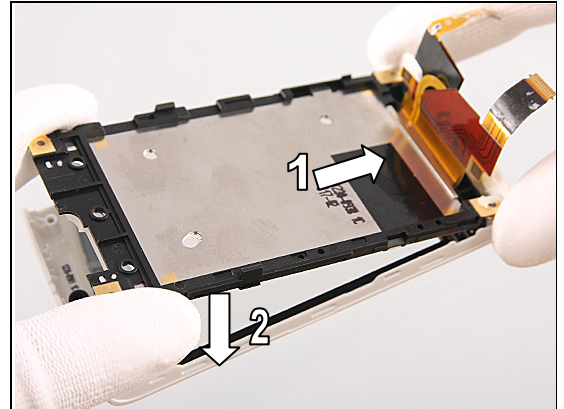
5.2 Cover Front assy

Prepare the Cover Front assy.



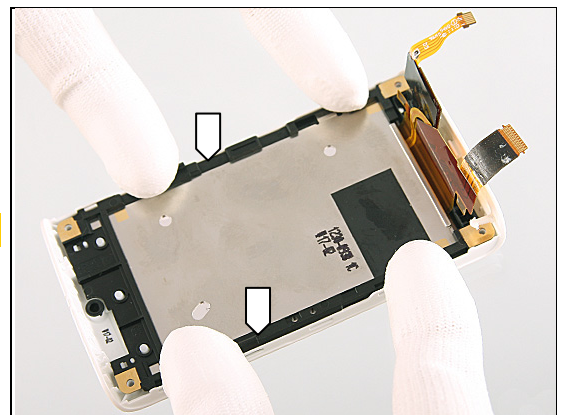
Reassembly

Turn over the Carrier LCM and place it in the Cover Front assy at approximately 30 degrees angle.



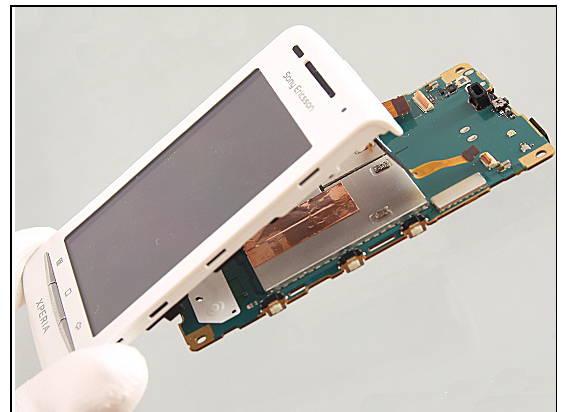
Press to snap the two hooks.

Listen for a click sound.

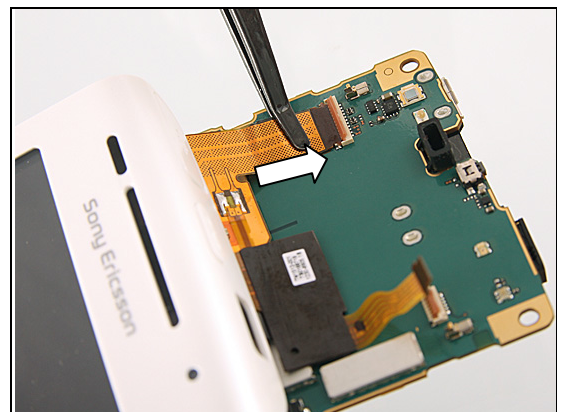


5.3 Main PBA

Place the front on top of the Main PBA.

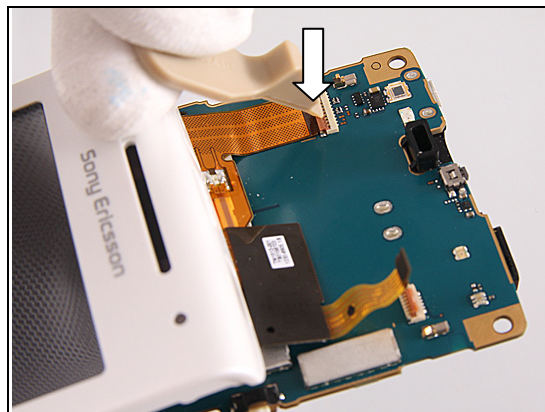


Connect the ZIF Connector for the display.

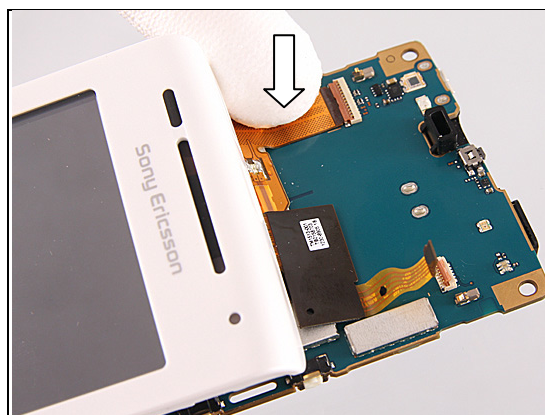


Reassembly

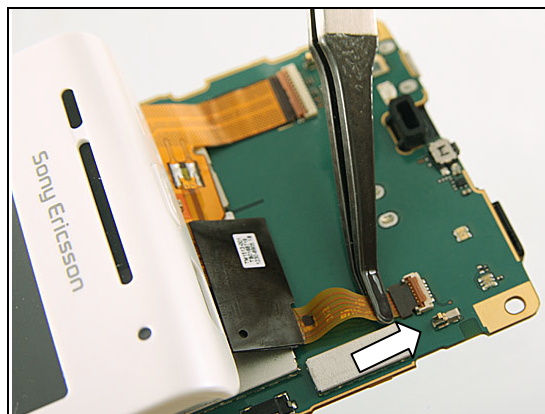
Snap the ZIF connector with a Front Opening Tool.



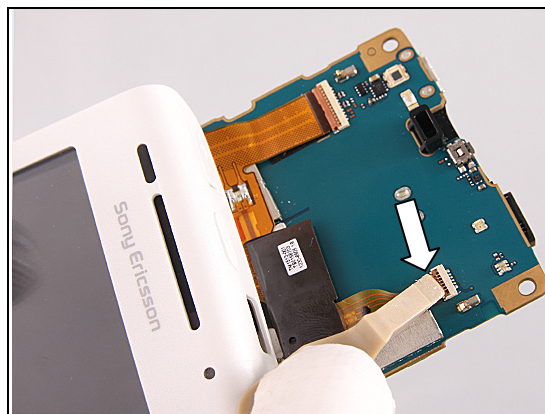
Press to attach the flex film to the Adhesive FPC Display on the Main PBA.



Connect the ZIF Connector for the touch.

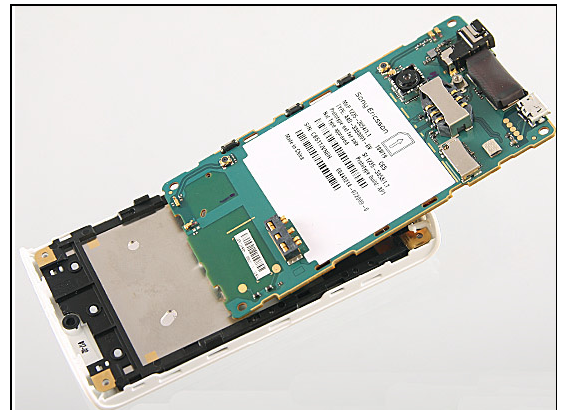


Snap the ZIF connector with a Front Opening Tool.



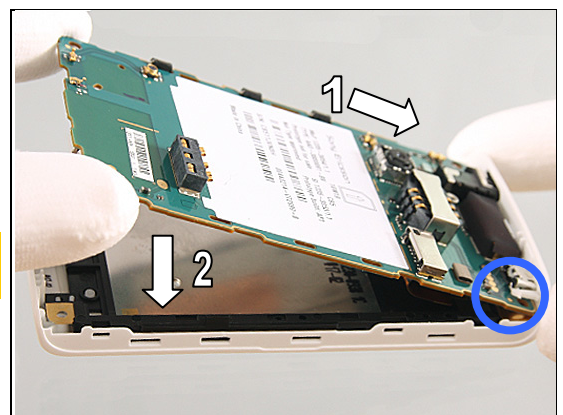
Reassembly

Turn over the unit.



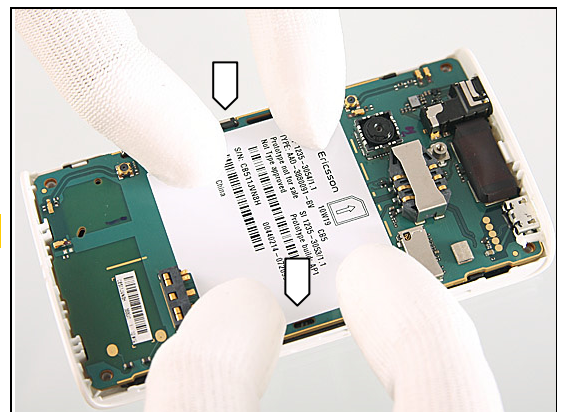
Place the Main PBA on top of the front at approximately 30 degrees angle. Insert the Micro USB connector and the audio connector first.

The 'tail' of Cap USB should not be squeezed between the Main PBA and the Carrier LCM.



Press to snap the two hooks.

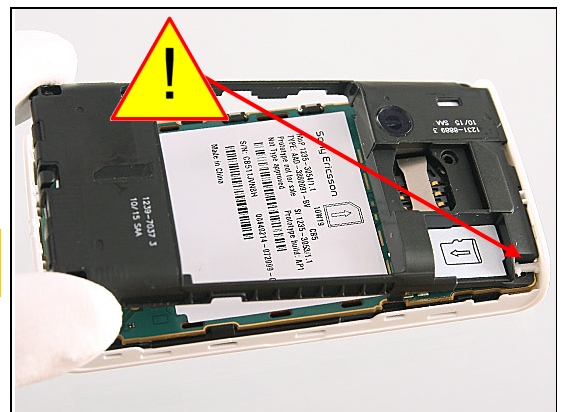
Listen for a click sound.



5.4 Inner Frame

Place the Inner Frame at the Main PBA.

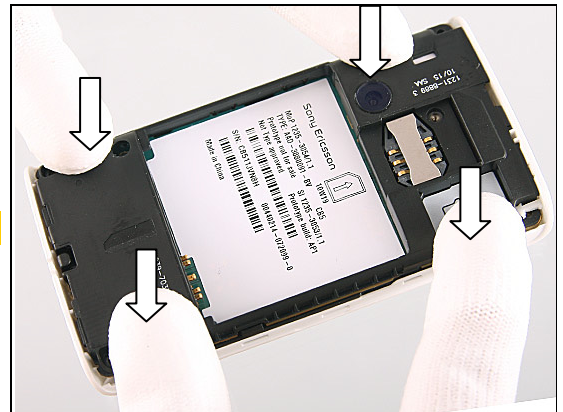
The 'tail' of Cap USB should not be squeezed between the Main PBA and the Inner Frame.



Reassembly

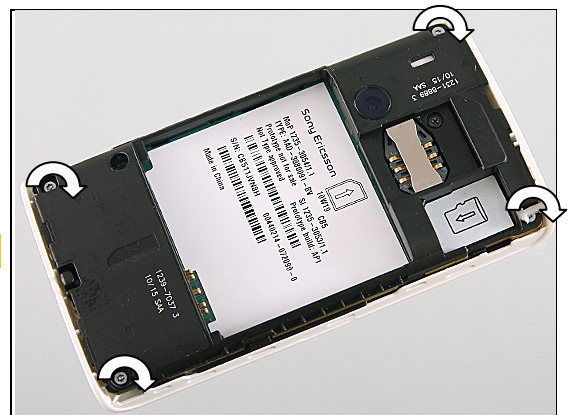
Press to snap the hooks.

Listen for a click sound.



Apply $14 \pm 0,7$ Ncm torque when tightening the four Screw Torx 5.5 x 1.6 with a screwdriver with T4 bits.

Take new screws!



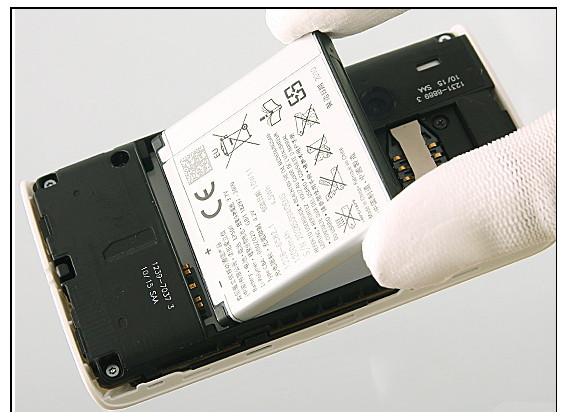
Apply $12 \pm 0,6$ Ncm torque when tightening the Screw Philips 2.2 x 1.4 with a screwdriver with PH00 bits.

Take a new screw!



5.5 Cover Rear

Reinstall the Battery.

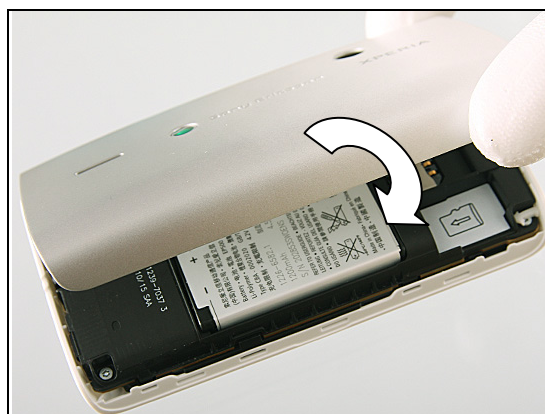


Reassembly

Press the Battery in place with a finger.



Place the Cover Rear in 30 degrees angle.



Press to snap all the hooks.





6 Country of Origin Barcodes for Brazil

Below is a link to a list of countries of origin. If you are printing a Brazil or VIVO label, scan the barcode corresponding to the correct country of origin for the “Fabricado” field.





7 Revision History

Rev.	Date	Changes / Comments
1	2010-Spet-27	Initial release
2	2011-May-16	Two new commercial models included - E16i and E16a Added Replacement instruction for Tape RF connector